



Wirral

Local Tobacco Control Profiles

Introduction

The aim of these profiles is to provide information for local government, health organisations, commissioners and other agencies to monitor the impact of tobacco on local communities, and to monitor the services and initiatives that have been put in place to tackle tobacco related problems.

The indicators contained within the web-tool were selected following consultation with stakeholders and a review of the availability of routine data. They are not exhaustive and should be used alongside local intelligence to gain a full picture of the range of tobacco control initiatives and issues in each locality.

The tobacco control profiles are part of a series of products produced by Public Health England that provide local data alongside national comparisons to support local health improvement.

Contents

Spine Charts

Key Indicators	Page 2
Smoking prevalence in adults	Page 2
Smoking prevalence in young people	Page 3
Smoking related mortality	Page 3
Smoking related ill health	Page 4
Impact of smoking	Page 4
Smoking quitters	Page 4

Tartan Rugs

Key Indicators	Page 5
Smoking prevalence in adults	Page 5
Smoking prevalence in young people	Page 6
Smoking related mortality	Page 7
Smoking related ill health	Page 8
Impact of smoking	Page 8
Smoking quitters	Page 9

Summary Charts

Key Indicators	Page 10
Smoking prevalence in adults	Page 12
Smoking prevalence in young people	Page 16
Smoking related mortality	Page 19
Smoking related ill health	Page 21
Impact of smoking	Page 23
Smoking quitters	Page 25

Trends

Key Indicators	Page 26
Smoking prevalence in adults	Page 27
Smoking prevalence in young people	Page 29
Smoking related mortality	Page 31
Smoking related ill health	Page 32
Impact of smoking	Page 33
Smoking quitters	Page 34

www.tobaccoprofiles.info

Produced by Public Health England.

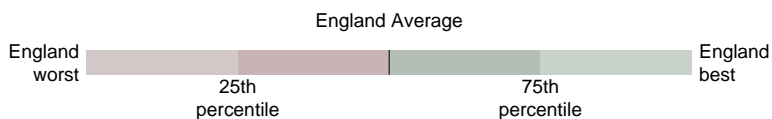
For enquiries please contact tobacco.profiles@phe.gov.uk or call us on 020 765 48167

Spine Charts

How to interpret the spine charts

Significance compared to England average:

- Significantly worse
- Significance not tested
- Not significantly different
- ◆ Regional average
- Significantly better



Key Indicators

	Period	Local value	Eng. value	Eng. worst	England Range	Eng. best
Smoking Prevalence in adults - current smokers (APS)	2016	15.7	15.5	24.2		7.4
Smoking Prevalence in adults in routine and manual occupations - current smokers (APS)	2016	24.8	26.5	36.2		7.8
Smoking prevalence age 15 years - regular smokers (SDD survey)	2014		8			
Smoking prevalence age 15 years - occasional smokers (SDD survey)	2014		5			
Successful quitters at 4 weeks	2015/16	2803	2598	482		5,788
Smoking status at time of delivery	2015/16	- x	10.6 \$	26.0		1.8
Smoking attributable mortality	2013 - 15	331.4	283.5	509.0		183.3
Smoking attributable hospital admissions	2015/16	1916	1726	3,142		955
Supporting information - Deprivation score (IMD 2015)	2015	26.9	21.8	42.0		5.7

Smoking prevalence in adults

	Period	Local value	Eng. value	Eng. worst	England Range	Eng. best
Smoking Prevalence in adults - current smokers (APS)	2016	15.7	15.5	24.2		7.4
Smoking Prevalence in adults - ex smokers (APS)	2016	28.3	26.2	11.4		36.3
Smoking Prevalence in adults - never smoked (APS)	2016	56.0	58.3	48.3		73.3
Smoking Prevalence in adults in routine and manual occupations - current smokers (APS)	2016	24.8	26.5	36.2		7.8
Smoking Prevalence in adults in routine and manual occupations - ex smokers (APS)	2016	26.0	21.9	6.3		30.7
Smoking Prevalence in adults in routine and manual occupations - never smoked (APS)	2016	49.2	51.5	41.0		82.6
Smoking Prevalence in adults - current smokers (IHS)	2014	17.6	18.0	26.9		9.8
Smoking Prevalence in adults - ex-smokers (IHS)	2014	34.1	33.9	14.4		44.2
Smoking Prevalence in adults - never smoked (IHS)	2014	48.2	48.1	38.1		65.0
Smoking prevalence in adults in routine and manual occupations - current smokers (IHS)	2014	26.0	28.0	41.1		14.0
Smoking prevalence in adults in routine and manual occupations - ex-smokers (IHS)	2014	30.9	30.8	12.7		40.9
Smoking prevalence in adults in routine and manual occupations - never smoked (IHS)	2014	43.0	41.2	29.1		61.9
Smoking prevalence - current smokers (GPPS)	2015/16	16.5	16.4	24.1		9.8

Note: x - Value Missing, \$ - Data quality note

Smoking prevalence in adults continued	Period	Local value	Eng. value	Eng. worst	England Range	Eng. best
Smoking prevalence - ex smoker (GPPS)	2015/16	29.6	27.5	14.7		35.4
Smoking prevalence - never smoked (GPPS)	2015/16	53.9	56.1	44.1		70.0
Smoking prevalence in adults - current smokers (QOF)	2015/16	18.6	18.1	26.8		11.9
Smoking prevalence in adults with serious mental illness (SMI)	2014/15	41.3	40.5	52.3		27.2
Smoking status at time of delivery	2015/16	- x	10.6 \$	26.0		1.8

Smoking prevalence in young people

	Period	Local value	Eng. value	Eng. worst	England Range	Eng. best
Smoking prevalence age 15 years - regular smokers (SDD survey)	2014		8			
Smoking prevalence age 15 years - occasional smokers (SDD survey)	2014		5			
Smoking prevalence at age 15 - current smokers (WAY survey)	2014/15	7.4	8.2	14.9		3.4
Smoking prevalence at age 15 - regular smokers (WAY survey)	2014/15	4.9	5.5	11.1		1.3
Smoking prevalence at age 15 - occasional smokers (WAY survey)	2014/15	2.5	2.7	7.6		0.6
Use of e-cigarettes at age 15 years (WAY survey)	2014/15	22.0	18.4	33.9		7.2
Use of other tobacco products at age 15 years (WAY survey)	2014/15	11.7	15.2	28.8		5.5
Smoking prevalence at ages 11-15 - regular smokers (modelled estimates)	2009 - 12	3.8	3.1	4.7		1.1
Smoking prevalence at ages 11-15 - occasional smokers (modelled estimates)	2009 - 12	1.5	1.4	2.0		0.5
Smoking prevalence at age 15 - regular smokers (modelled estimates)	2009 - 12	10.4	8.7	12.7		3.2
Smoking prevalence at age 15 - occasional smokers (modelled estimates)	2009 - 12	4.0	3.9	5.3		1.4
Smoking prevalence at ages 16-17 - regular smokers (modelled estimates)	2009 - 12	17.3	14.7	20.7		5.7
Smoking prevalence at ages 16-17 - occasional smokers (modelled estimates)	2009 - 12	5.9	5.8	7.8		2.2

Smoking related mortality

	Period	Local value	Eng. value	Eng. worst	England Range	Eng. best
Smoking attributable mortality	2013 - 15	331.4	283.5	509.0		183.3
Deaths from lung cancer	2013 - 15	71.1	58.7	110.8		33.0
Deaths from chronic obstructive pulmonary disease	2013 - 15	63.8	52.6	101.4		30.1
Smoking attributable deaths from heart disease	2013 - 15	30.2	28.9	58.2		17.9
Smoking attributable deaths from stroke	2013 - 15	11.0	9.4	22.3		5.0
Potential years of life lost due to smoking related illness	2013 - 15	1723	1399	2,696		869
Stillbirth rate	2013 - 15	4.9	4.6	7.0		2.0

Note: x - Value Missing, \$ - Data quality note

Wirral

Smoking related mortality continued	Period	Local value	Eng. value	Eng. worst	England Range	Eng. best
Neonatal mortality	2013 - 15	1.97	2.71	5.76		1.23

Smoking related ill health

	Period	Local value	Eng. value	Eng. worst	England Range	Eng. best
Premature births (less than 37 weeks gestation)	2013 - 15	87.1	78.4	106.5		63.5
Low birth weight of term babies	2015	2.3	2.8	4.8		1.3
Hospital admissions for asthma (under 19 years)	2015/16	263.3	202.4	591.6		84.3
Smoking attributable hospital admissions	2015/16	1916	1726	3,142		955
Cost per capita of smoking attributable hospital admissions	2011/12	42.2	38.0	59.3		23.0
Emergency hospital admissions for COPD	2015/16	527	411	911		182
Lung cancer registrations	2013 - 15	95.9	78.9	156.9		39.7
Oral cancer registrations	2013 - 15	18.2	14.5	23.6		9.3

Impact of smoking

	Period	Local value	Eng. value	Eng. worst	England Range	Eng. best
Indicative tobacco sales figures (£ millions)	2013	91.8	15446.1	440.2		13.2
Illicit tobacco: tax gap (£ millions)	2015/16		1600			
Illicit tobacco: share of cigarette sales (%)	2015/16		13			
Fatalities from accidental fires ignited by smoking related materials (%)	2015/16		41.36			
Accidental fires ignited by smoking related materials (%)	2015/16		7.84			
Attitudes to smoking in 15 year olds - 'smoking causes harm to others' (WAY survey)	2014/15	93.2	90.9	87.0		96.3

Smoking quitters

	Period	Local value	Eng. value	Eng. worst	England Range	Eng. best
Number setting a quit date	2015/16	5633	5092	952		12,604
Successful quitters at 4 weeks	2015/16	2803	2598	482		5,788
Successful quitters (CO validated) at 4 weeks	2015/16	2455	1854	442		4,984
Completeness of NS-SEC recording by Stop Smoking Services	2015/16	91.2	91.1	46.7		100
Cost per quitter	2015/16	- x	479 ~	1,649		96

Note: x - Value Missing, ~ - Aggregated from all known lower geography values

Tartan Rugs

Key Indicators

	Period	England	North West	Blackburn	Blackpool	Bolton	Bury	Chesh East	Ch W & Ches	Cumbria	Halton	Knowsley	Lancs	Liverpool	Manchester	Oldham	Rochdale	Salford	Sefton	St. Helens	Stockport	Tameside	Trafford	Warrington	Wigan	Wirral
Smoking Prevalence in adults - current smokers (APS)	2016	15.5	16.8	19.5	22.5	17.9	19.1	13.3	11.7	15.5	16.6	20.5	16.0	18.9	21.7	18.8	19.4	20.3	12.8	17.6	12.2	22.1	12.6	12.6	17.7	15.7
Smoking Prevalence in adults in routine and manual occupations - current smokers (APS)	2016	26.5	26.8	32.1	36.2	25.3	29.9	24.4	25.6	22.1	24.1	31.7	23.9	28.8	28.7	27.4	32.1	31.0	21.3	26.2	22.4	35.6	28.0	26.4	26.3	24.8
Smoking prevalence age 15 years - regular smokers (SDD survey)	2014	8	--																							
Smoking prevalence age 15 years - occasional smokers (SDD survey)	2014	5	--																							
Successful quitters at 4 weeks	2015/16	2598	2479	4164	2377	1558	1245	3255	3800	1054	2692	5725	3293	3415	- x	1980	1635	2512	4841	3508	1861	1974	1089	3435	1614	2803
Smoking status at time of delivery	2015/16	10.6 \$	13.7 \$	14.7	26.0	15.0	11.1	11.6	9.9	12.3	18.5	19.4	- x	16.1	11.6	13.2	17.0	13.8	- x	16.1	10.6	15.8	7.5	9.1 \$	14.8	- x
Smoking attributable mortality	2013 - 15	283.5	342.9	385.2	459.7	350.8	336.5	232.4	269.6	281.6	401.5	470.5	322.3	457.8	509.0	381.1	391.4	421.5	300.9	371.4	276.5	416.6	271.4	318.1	363.3	331.4
Smoking attributable hospital admissions	2015/16	1726	1949	2201	3043	1826	1735	1263	1483	1955	1705	2515	1900	2491	2898	2018	2180	2454	1649	1620	1660	2420	1655	1460	1960	1916
Supporting information - Deprivation score (IMD 2015)	2015	21.8	--	34.2	42.0	28.4	21.8	14.1	18.1	21.3	31.9	41.4	22.5	41.1	40.5	30.3	33.7	33.0	25.7	29.8	19.1	29.4	15.4	19.3	24.9	26.9

Smoking prevalence in adults

Smoking Prevalence in adults - current smokers (APS)	2016	15.5	16.8	19.5	22.5	17.9	19.1	13.3	11.7	15.5	16.6	20.5	16.0	18.9	21.7	18.8	19.4	20.3	12.8	17.6	12.2	22.1	12.6	12.6	17.7	15.7
Smoking Prevalence in adults - ex smokers (APS)	2016	26.2	25.9	26.0	29.2	24.0	25.6	25.5	24.5	29.4	29.5	27.2	27.3	21.7	18.8	26.5	24.9	25.1	26.5	27.2	29.5	26.0	26.3	26.9	27.2	28.3
Smoking Prevalence in adults - never smoked (APS)	2016	58.3	57.2	54.4	48.3	58.1	55.3	61.2	63.8	55.0	53.9	52.3	56.7	59.4	59.5	54.7	55.8	54.6	60.7	55.2	58.3	51.9	61.1	60.5	55.1	56.0
Smoking Prevalence in adults in routine and manual occupations - current smokers (APS)	2016	26.5	26.8	32.1	36.2	25.3	29.9	24.4	25.6	22.1	24.1	31.7	23.9	28.8	28.7	27.4	32.1	31.0	21.3	26.2	22.4	35.6	28.0	26.4	26.3	24.8
Smoking Prevalence in adults in routine and manual occupations - ex smokers (APS)	2016	21.9	22.8	18.8	22.6	23.0	25.6	23.5	25.9	28.9	22.5	24.3	23.5	19.4	18.7	22.4	16.4	20.2	21.8	23.2	22.8	22.2	17.8	20.4	26.3	26.0

Comparison with respect to England value Better Similar Worse Not compared

Note: x - Value Missing, \$ - Data quality note, -- - Aggregated from all known lower geography values

Wirral

Smoking prevalence in adults continued

	Period	England	North West	Blackburn	Blackpool	Bolton	Bury	Chesh East	Ch W & Ches	Cumbria	Halton	Knowsley	Lancs	Liverpool	Manchester	Oldham	Rochdale	Salford	Sefton	St. Helens	Stockport	Tameside	Trafford	Warrington	Wigan	Wirral
Smoking Prevalence in adults in routine and manual occupations - never smoked (APS)	2016	51.5	50.4	49.2	41.2	51.6	44.5	52.1	48.5	48.9	53.5	44.0	52.7	51.8	52.6	50.2	51.5	48.8	56.9	50.6	54.8	42.2	54.2	53.2	47.4	49.2
Smoking Prevalence in adults - current smokers (IHS)	2014	18.0	19.9	23.6	26.9	20.9	20.5	12.6	20.1	19.1	17.8	21.7	19.5	21.7	25.8	20.1	21.1	24.4	15.9	19.4	17.1	22.5	15.5	15.5	20.6	17.6
Smoking Prevalence in adults - ex-smokers (IHS)	2014	33.9	32.4	30.9	34.3	30.7	32.6	36.9	30.2	35.1	32.5	34.1	31.5	32.6	27.2	31.0	30.2	27.5	35.5	30.4	34.1	34.6	35.3	36.6	32.8	34.1
Smoking Prevalence in adults - never smoked (IHS)	2014	48.1	47.7	45.5	38.7	48.4	46.9	50.6	49.8	45.8	49.7	44.2	49.0	45.7	47.0	48.9	48.7	48.1	48.5	50.2	48.7	42.9	49.2	47.9	46.6	48.2
Smoking prevalence in adults in routine and manual occupations - current smokers (IHS)	2014	28.0	28.6	35.2	35.7	27.3	35.1	14.3	26.2	28.6	23.6	30.8	29.1	33.4	27.3	31.8	30.0	36.0	21.9	25.5	30.8	35.0	27.8	24.4	31.4	26.0
Smoking prevalence in adults in routine and manual occupations - ex-smokers (IHS)	2014	30.8	30.2	27.9	27.6	29.8	28.2	37.1	24.5	30.9	28.6	30.4	31.6	28.7	29.5	29.5	25.9	22.8	32.2	28.3	31.3	31.5	31.8	35.0	30.7	30.9
Smoking prevalence in adults in routine and manual occupations - never smoked (IHS)	2014	41.2	41.3	36.9	36.7	42.8	36.7	48.6	49.4	40.5	47.7	38.8	39.3	37.8	43.2	38.7	44.1	41.2	45.9	46.1	38.0	33.5	40.4	40.6	37.9	43.0
Smoking prevalence - current smokers (GPPS)	2015/16	16.4	17.6	21.4	24.1	17.5	17.4	14.8	14.8	15.2	18.0	19.8	17.2	19.6	22.5	19.7	21.5	19.7	15.0	16.8	15.1	19.9	13.9	13.4	17.6	16.5
Smoking prevalence - ex smoker (GPPS)	2015/16	27.5	27.9	25.1	31.8	25.6	28.6	27.9	28.1	27.9	25.3	29.0	30.0	26.1	21.5	27.3	25.8	25.9	30.0	27.8	28.7	29.6	28.0	28.7	30.5	29.6
Smoking prevalence - never smoked (GPPS)	2015/16	56.1	54.5	53.5	44.1	56.9	54.0	57.3	57.1	57.0	56.7	51.3	52.8	54.2	56.0	53.0	52.7	54.4	54.9	55.4	56.1	50.5	58.1	57.9	51.9	53.9
Smoking prevalence in adults - current smokers (QOF)	2015/16	18.1	19.6	21.0	26.8	20.5	18.4	15.3	16.0	17.3	21.0	23.3	19.1	22.0	22.5	21.8	22.3	22.8	17.7	19.0	17.4	22.2	16.0	16.8	19.2	18.6
Smoking prevalence in adults with serious mental illness (SMI)	2014/15	40.5	45.0	46.1	50.0	44.8	40.3	36.9	38.9	40.2	47.5	50.6	42.9	50.9	51.1	45.5	47.8	48.7	42.6	43.8	39.7	43.4	42.1	43.8	48.2	41.3
Smoking status at time of delivery	2015/16	10.6	13.7	14.7	26.0	15.0	11.1	11.6	9.9	12.3	18.5	19.4	- x	16.1	11.6	13.2	17.0	13.8	- x	16.1	10.6	15.8	7.5	9.1	14.8	- x

Smoking prevalence in young people

Smoking prevalence age 15 years - regular smokers (SDD survey)	2014	8	--
Smoking prevalence age 15 years - occasional smokers (SDD survey)	2014	5	--

Comparison with respect to England value

Better	Similar	Worse	Not compared
--------	---------	-------	--------------

Note: x - Value Missing, \$ - Data quality note, ~ - Aggregated from all known lower geography values

Smoking prevalence in young people continued

	Period	England	North West	Blackburn	Blackpool	Bolton	Bury	Chesh East	Ch W & Ches	Cumbria	Halton	Knowsley	Lancs	Liverpool	Manchester	Oldham	Rochdale	Salford	Sefton	St. Helens	Stockport	Tameside	Trafford	Warrington	Wigan	Wirral
Smoking prevalence at age 15 - current smokers (WAY survey)	2014/15	8.2	8.0	8.0	13.4	8.9	8.7	7.5	6.8	7.3	8.9	7.1	9.0	6.5	8.9	6.7	7.0	8.0	7.0	8.7	7.1	11.8	5.3	9.0	7.1	7.4
Smoking prevalence at age 15 - regular smokers (WAY survey)	2014/15	5.5	5.5	6.6	11.1	6.9	4.7	4.5	5.1	5.1	6.5	5.8	5.7	3.9	5.6	4.9	6.2	5.9	5.3	6.2	4.4	8.9	2.9	5.5	4.9	4.9
Smoking prevalence at age 15 - occasional smokers (WAY survey)	2014/15	2.7	2.5	1.5	2.3	2.0	4.0	3.0	1.7	2.2	2.4	1.3	3.3	2.6	3.2	1.8	0.8	2.2	1.7	2.4	2.6	2.8	2.5	3.6	2.1	2.5
Use of e-cigarettes at age 15 years (WAY survey)	2014/15	18.4	24.5	32.2	33.9	24.0	24.2	23.0	23.9	19.9	24.7	16.1	27.7	14.9	23.9	28.7	25.7	24.1	19.3	22.4	24.5	31.7	24.2	25.5	31.1	22.0
Use of other tobacco products at age 15 years (WAY survey)	2014/15	15.2	11.3	16.5	9.5	14.5	11.8	11.3	9.1	6.8	7.1	11.2	11.1	13.5	17.6	15.3	12.4	9.0	7.3	8.2	12.8	10.6	16.0	7.1	7.0	11.7
Smoking prevalence at ages 11-15 - regular smokers (modelled estimates)	2009 - 12	3.1	--	2.5	4.3	2.9	3.0	3.2	3.6	3.6	4.2	4.2	3.3	4.4	3.3	3.0	3.1	4.2	3.6	3.8	3.1	3.5	2.8	3.4	3.8	3.8
Smoking prevalence at ages 11-15 - occasional smokers (modelled estimates)	2009 - 12	1.4	--	1.0	1.2	1.2	1.4	1.7	1.7	1.6	1.4	1.2	1.5	1.3	1.1	1.3	1.2	1.4	1.5	1.5	1.5	1.3	1.5	1.6	1.5	1.5
Smoking prevalence at age 15 - regular smokers (modelled estimates)	2009 - 12	8.7	--	6.9	11.6	8.1	8.4	9.0	9.8	9.9	11.4	11.6	9.0	12.1	9.2	8.4	8.6	11.5	10.0	10.4	8.5	9.6	7.9	9.3	10.3	10.4
Smoking prevalence at age 15 - occasional smokers (modelled estimates)	2009 - 12	3.9	--	2.6	3.4	3.2	3.7	4.6	4.6	4.4	3.8	3.4	4.0	3.4	3.0	3.4	3.2	3.8	4.0	3.9	3.9	3.6	4.0	4.3	4.0	4.0
Smoking prevalence at ages 16-17 - regular smokers (modelled estimates)	2009 - 12	14.7	--	11.8	19.1	13.8	14.3	15.2	16.4	16.7	18.7	19.0	15.4	19.8	15.5	14.2	14.6	19.0	16.6	17.4	14.4	16.1	13.6	15.7	17.2	17.3
Smoking prevalence at ages 16-17 - occasional smokers (modelled estimates)	2009 - 12	5.8	--	3.9	5.0	4.8	5.6	6.9	6.8	6.6	5.7	5.0	6.0	5.1	4.5	5.1	4.8	5.6	6.0	5.9	5.9	5.4	5.9	6.3	6.0	5.9

Smoking related mortality

Smoking attributable mortality	2013 - 15	283.5	342.9	385.2	459.7	350.8	336.5	232.4	269.6	281.6	401.5	470.5	322.3	457.8	509.0	381.1	391.4	421.5	300.9	371.4	276.5	416.6	271.4	318.1	363.3	331.4
Deaths from lung cancer	2013 - 15	58.7	74.2	72.4	87.9	68.9	74.5	51.0	61.3	56.9	99.4	108.6	67.6	104.1	110.8	83.4	79.3	89.0	71.8	77.4	64.8	92.3	62.2	70.9	79.1	71.1
Deaths from chronic obstructive pulmonary disease	2013 - 15	52.6	65.8	79.4	86.2	78.0	63.3	39.9	46.3	51.8	77.1	94.7	60.4	93.1	101.4	74.1	81.0	82.7	59.9	82.5	54.3	72.6	45.9	59.3	68.8	63.8

Comparison with respect to England value

Better	Similar	Worse	Not compared
--------	---------	-------	--------------

Note: -- Aggregated from all known lower geography values

Wirral

Smoking related mortality continued

	Period	England	North West	Blackburn	Blackpool	Bolton	Bury	Chesh East	Ch W & Ches	Cumbria	Halton	Knowsley	Lancs	Liverpool	Manchester	Oldham	Rochdale	Salford	Sefton	St. Helens	Stockport	Tameside	Trafford	Warrington	Wigan	Wirral
Smoking attributable deaths from heart disease	2013 - 15	28.9	35.7	49.2	51.1	34.7	36.1	24.5	25.0	31.5	37.7	42.4	34.6	36.3	58.2	43.4	44.1	45.9	29.1	34.9	26.1	56.6	27.9	33.8	35.6	30.2
Smoking attributable deaths from stroke	2013 - 15	9.4	11.8	10.8	16.9	10.5	13.1	7.8	7.1	10.6	10.5	15.7	11.3	16.0	22.3	12.0	13.1	14.6	9.5	13.3	7.5	14.7	10.3	11.0	12.3	11.0
Potential years of life lost due to smoking related illness	2013 - 15	1399	1737	2089	2649	1742	1668	1175	1289	1398	2044	2222	1601	2308	2696	1988	2040	2152	1565	1869	1309	2015	1334	1478	1690	1723
Stillbirth rate	2013 - 15	4.6	4.8	6.8	5.7	6.5	5.8	3.9	3.3	3.2	4.9	4.9	4.9	5.2	5.6	5.4	4.3	5.1	3.6	3.7	4.6	5.1	3.8	3.4	4.7	4.9
Neonatal mortality	2013 - 15	2.71	2.77	3.04	4.23	2.11	2.66	2.99	2.53	2.51	- *	2.31	2.87	3.16	3.41	3.54	2.73	1.98	3.21	- *	3.14	1.83	2.16	2.95	2.82	1.97

Smoking related ill health

Premature births (less than 37 weeks gestation)	2013 - 15	78.4	82.7	87.2	100.3	82.2	71.7	71.5	80.4	84.0	86.2	92.4	83.9	97.6	77.7	83.7	86.0	77.3	85.7	84.6	68.3	84.1	74.0	68.7	90.3	87.1
Low birth weight of term babies	2015	2.8	2.8	4.3	2.9	3.2	2.5	2.2	2.4	3.0	1.7	2.1	2.8	2.9	3.3	3.5	2.9	2.9	2.5	2.0	2.2	4.1	2.9	2.1	3.1	2.3
Hospital admissions for asthma (under 19 years)	2015/16	202.4	317.2	399.1	410.3	259.6	349.8	226.8	165.1	227.2	359.6	310.3	342.2	302.3	591.6	356.4	376.3	331.2	297.0	244.6	315.3	348.4	275.8	142.6	225.6	263.3
Smoking attributable hospital admissions	2015/16	1726	1949	2201	3043	1826	1735	1263	1483	1955	1705	2515	1900	2491	2898	2018	2180	2454	1649	1620	1660	2420	1655	1460	1960	1916
Cost per capita of smoking attributable hospital admissions	2011/12	38.0	42.7	43.4	46.5	40.1	37.1	29.6	35.3	43.6	43.6	52.6	40.9	51.0	54.2	46.0	42.1	51.5	40.8	41.7	43.9	53.5	36.6	36.1	42.0	42.2
Emergency hospital admissions for COPD	2015/16	411	534	871	809	518	346	331	350	380	519	873	503	797	911	472	586	784	499	513	489	745	358	419	512	527
Lung cancer registrations	2013 - 15	78.9	99.8	100.6	110.7	98.4	104.4	68.3	83.4	73.7	113.2	156.9	87.0	146.7	148.8	116.0	111.4	122.4	99.6	99.2	86.3	119.1	92.4	93.1	109.1	95.9
Oral cancer registrations	2013 - 15	14.5	17.1	15.3	19.3	17.8	17.0	14.5	15.7	15.0	17.4	23.6	15.4	22.9	22.0	18.7	19.5	18.1	18.8	18.5	13.6	18.0	14.9	16.3	14.3	18.2

Impact of smoking

Indicative tobacco sales figures (£ millions)	2013 ^{15446.1}	2219.7	48.4	58.9	88.9	51.9	102.0	86.3	144.7	35.6	52.5	367.6	172.4	187.9	70.5	72.5	84.7	81.3	54.4	65.0	76.1	68.8	57.2	100.4	91.8	
Illicit tobacco: tax gap (£ millions)	2015/16	1600	- ~																							

Comparison with respect to England value

Better	Similar	Worse	Not compared
--------	---------	-------	--------------

Note: * - Disclosure control applied, ~ - Aggregated from all known lower geography values

Impact of smoking continued

	Period	England	North West	Blackburn	Blackpool	Bolton	Bury	Chesh East	Ch W & Ches	Cumbria	Halton	Knowsley	Lancs	Liverpool	Manchester	Oldham	Rochdale	Salford	Sefton	St. Helens	Stockport	Tameside	Trafford	Warrington	Wigan	Wirral
Illicit tobacco: share of cigarette sales (%)	2015/16	13	- ~																							
Fatalities from accidental fires ignited by smoking related materials (%)	2015/16	41.36																								
Accidental fires ignited by smoking related materials (%)	2015/16	7.84																								
Attitudes to smoking in 15 year olds - 'smoking causes harm to others' (WAY survey)	2014/15	90.9	91.0	94.6	87.0	90.5	91.0	92.2	92.6	90.8	90.6	91.6	91.1	92.5	91.6	90.1	91.6	89.6	91.0	91.3	92.2	90.3	90.9	90.6	92.8	93.2

Smoking quitters

Number setting a quit date	2015/16	5092	5126	8814	6978	2719	1911	5941	7555	3743	4926	12604	6614	6872	- x	3784	2785	5610	9867	5968	5029	3209	3118	4150	4742	5633
Successful quitters at 4 weeks	2015/16	2598	2479	4164	2377	1558	1245	3255	3800	1054	2692	5725	3293	3415	- x	1980	1635	2512	4841	3508	1861	1974	1089	3435	1614	2803
Successful quitters (CO validated) at 4 weeks	2015/16	1854	1573	3161	887	1059	1135	1875	2316	721	1960	3973	2033	2352	- x	928	1420	1447	3252	2433	597	1271	536	1270	749	2455
Completeness of NS-SEC recording by Stop Smoking Services	2015/16	91.1	91.2	97.6	95.8	96.2	93.2	100	100	100	91.3	83.8	97.8	95.1	- x	100	68.2	70.5	95.0	95.5	55.7	88.9	63.5	94.5	73.4	91.2
Cost per quitter	2015/16	479 ~	444 ~	358	831	592	616	413	247	319	432	502	231	350	- x	413	664	632	693	803	1046	282	502	469	601	- x

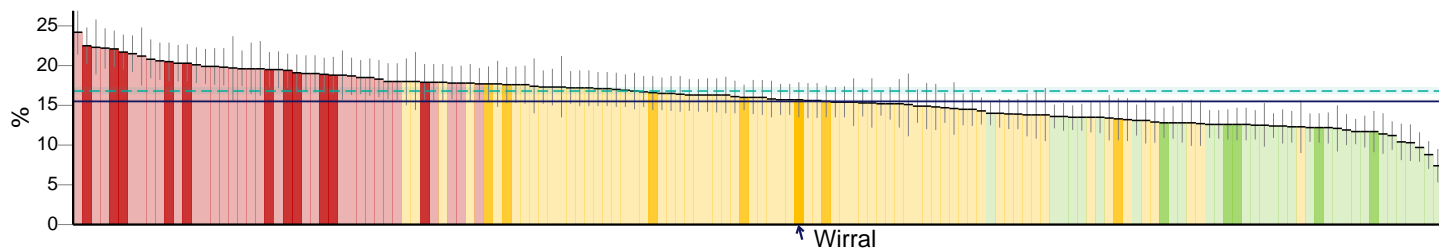
Comparison with respect to England value Better Similar Worse Not compared

Note: x - Value Missing, ~ - Aggregated from all known lower geography values

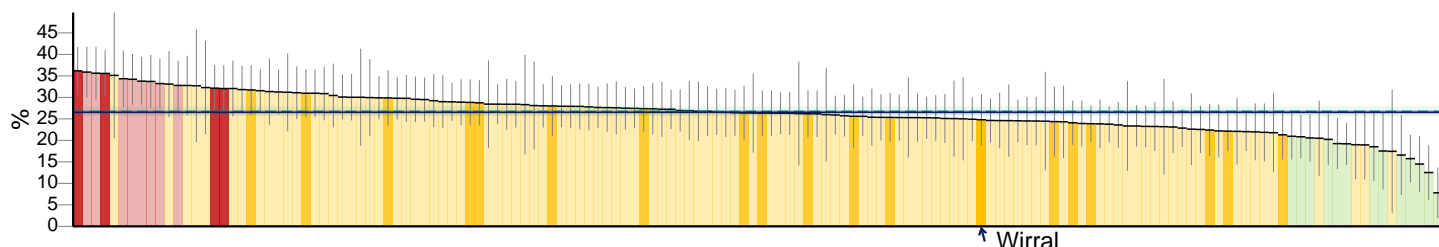
Summary Charts

Key Indicators

Smoking Prevalence in adults - current smokers (APS) (2016)



Smoking Prevalence in adults in routine and manual occupations - current smokers (APS) (2016)



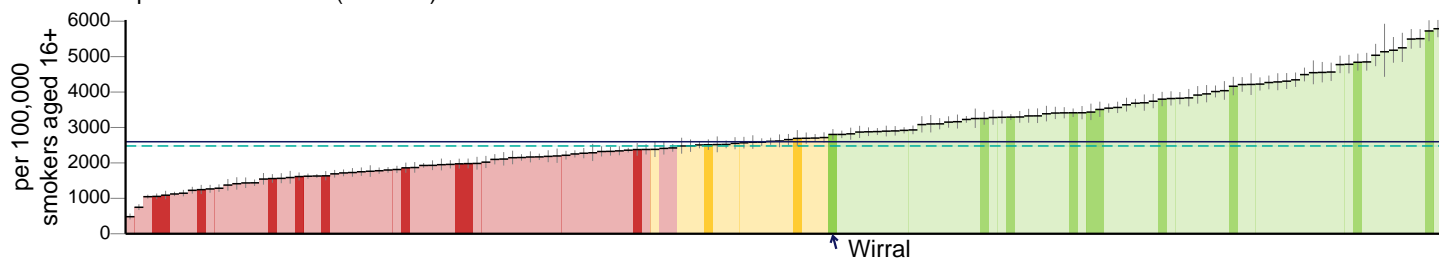
Smoking prevalence age 15 years - regular smokers (SDD survey) (2014)

No data

Smoking prevalence age 15 years - occasional smokers (SDD survey) (2014)

No data

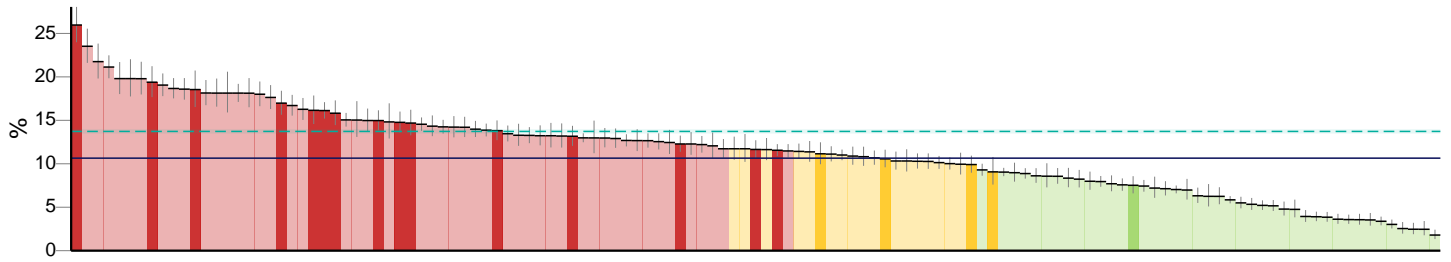
Successful quitters at 4 weeks (2015/16)



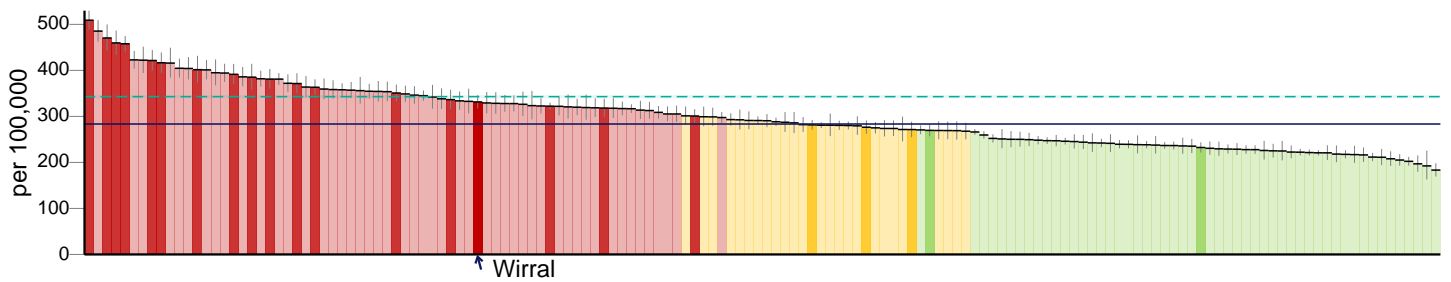
Key
 England value and confidence interval
 Significantly worse
 Not significantly different
 Significantly better
 Significance not tested
↑ Wirral
 North West region value and confidence interval

Key Indicators continued

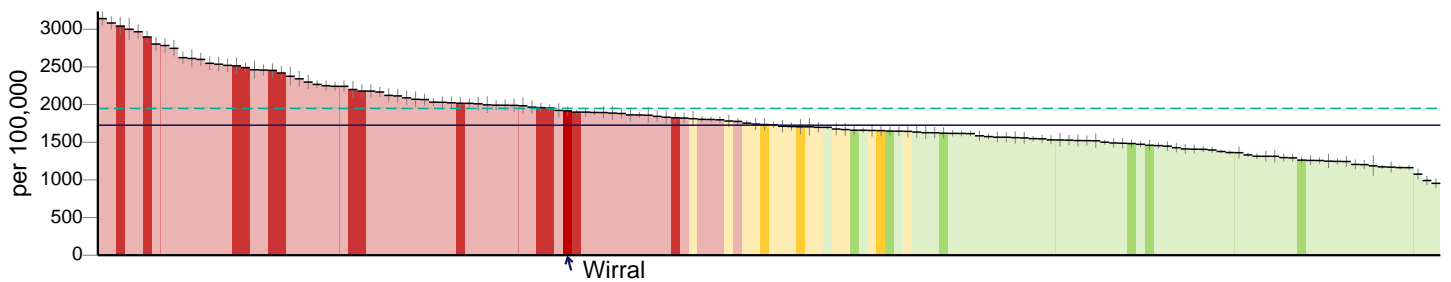
Smoking status at time of delivery (2015/16)



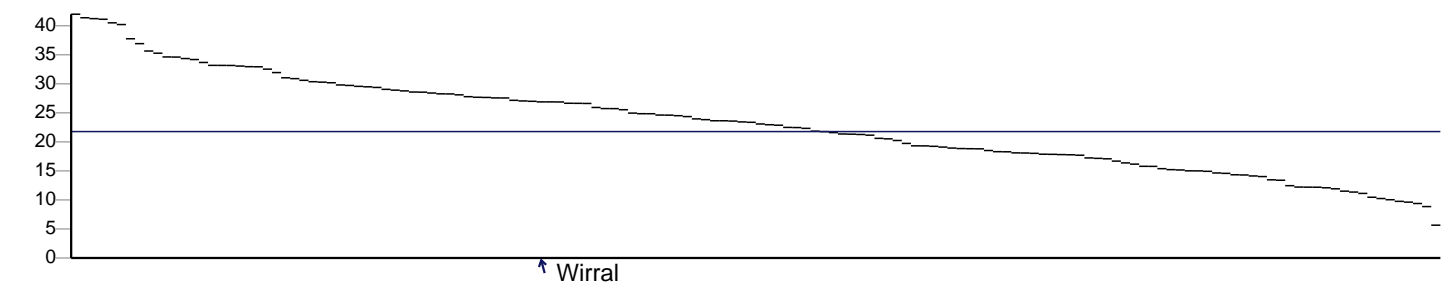
Smoking attributable mortality (2013 - 15)



Smoking attributable hospital admissions (2015/16)



Supporting information - Deprivation score (IMD 2015) (2015)

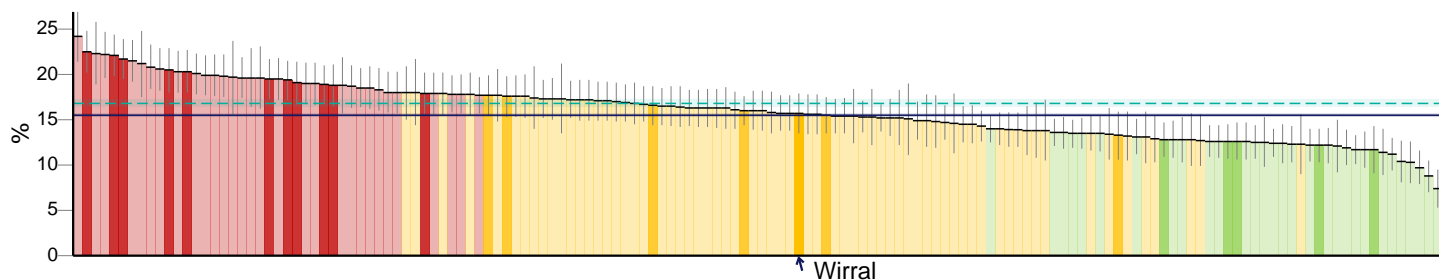


Key England value and confidence interval ↑ Wirral North West region value and confidence interval
 Significantly worse Not significantly different Significantly better Significance not tested

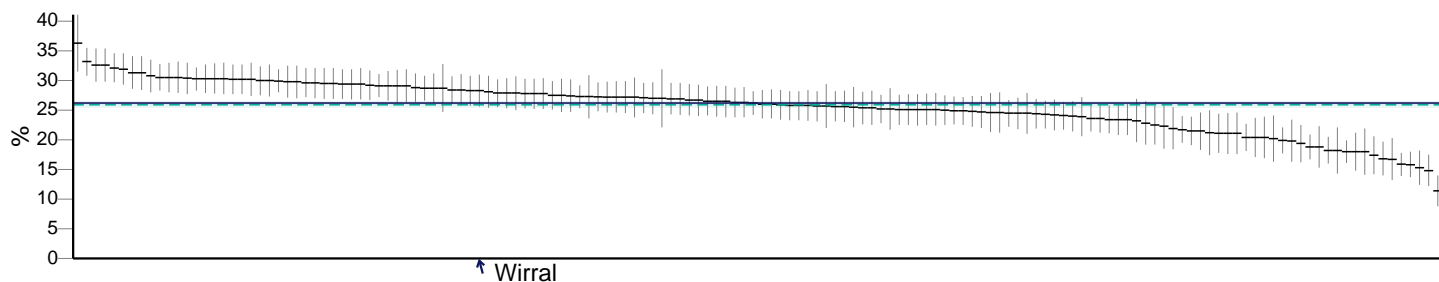
Wirral

Smoking prevalence in adults

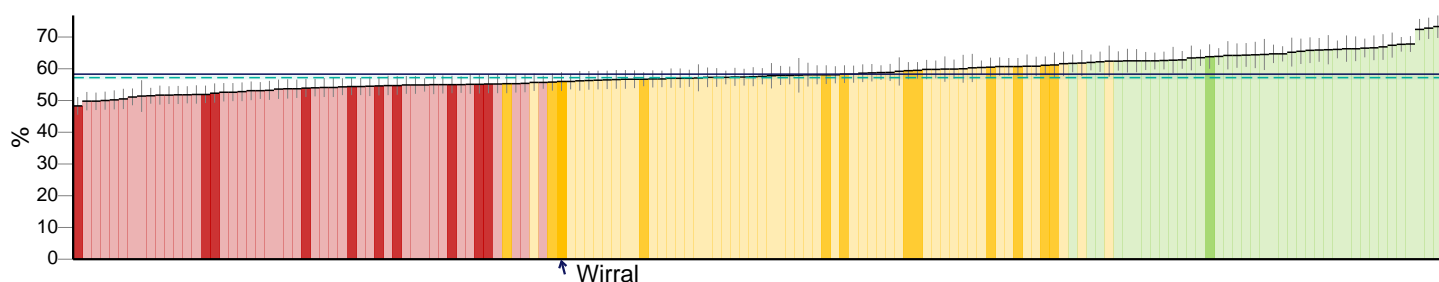
Smoking Prevalence in adults - current smokers (APS) (2016)



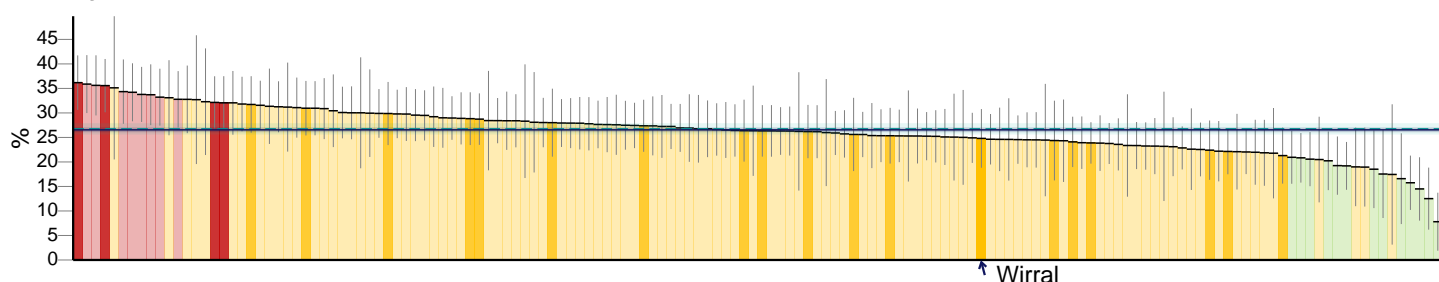
Smoking Prevalence in adults - ex smokers (APS) (2016)



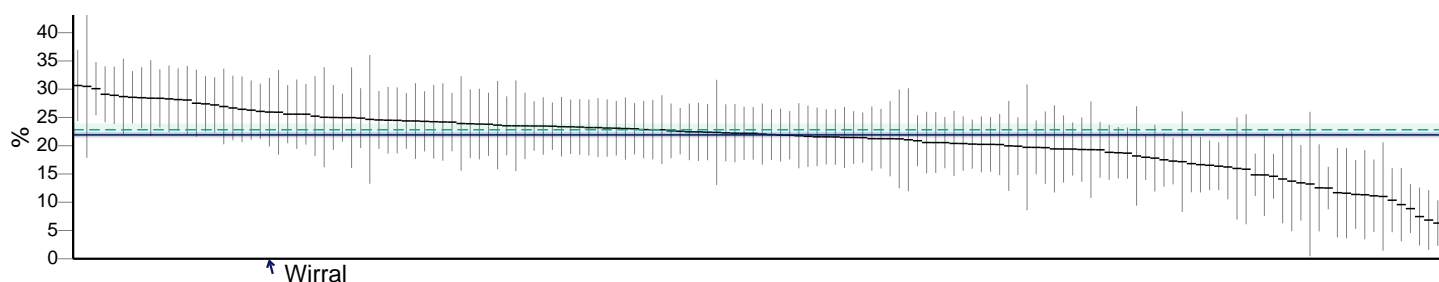
Smoking Prevalence in adults - never smoked (APS) (2016)



Smoking Prevalence in adults in routine and manual occupations - current smokers (APS) (2016)



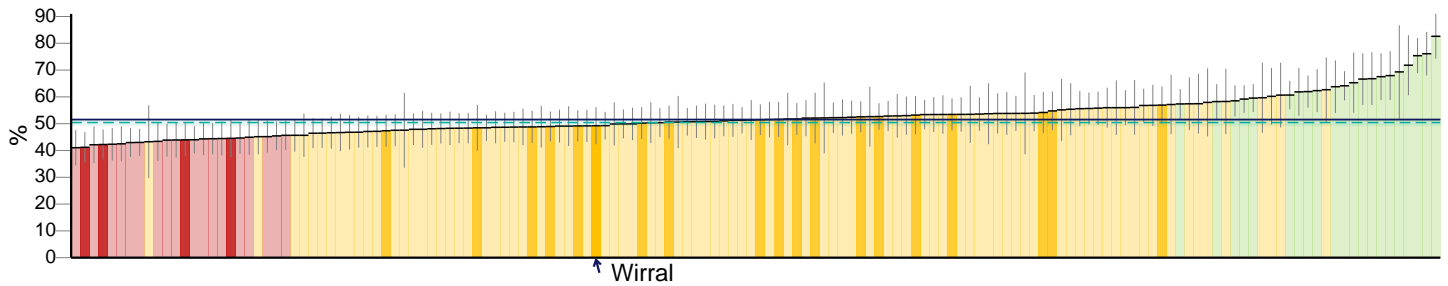
Smoking Prevalence in adults in routine and manual occupations - ex smokers (APS) (2016)



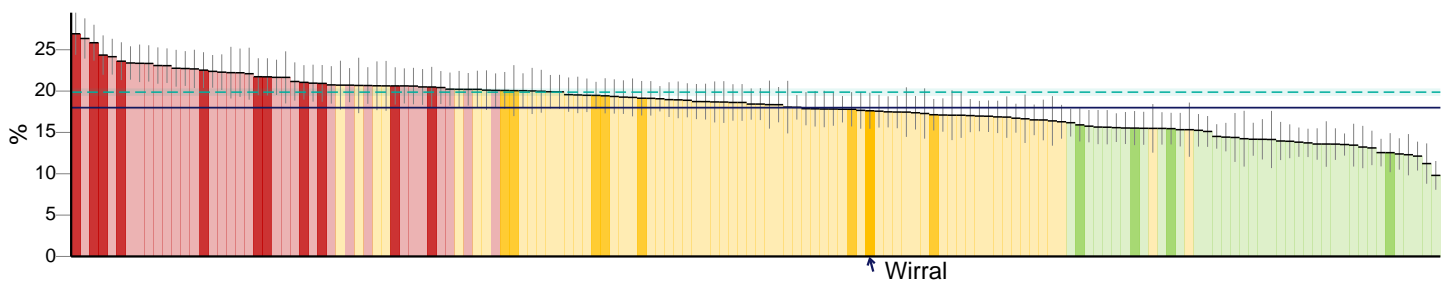
Key
 England value and confidence interval
 Not significantly different
 Significantly better
 Significance not tested
↑ Wirral
- - - North West region value and confidence interval

Smoking prevalence in adults continued

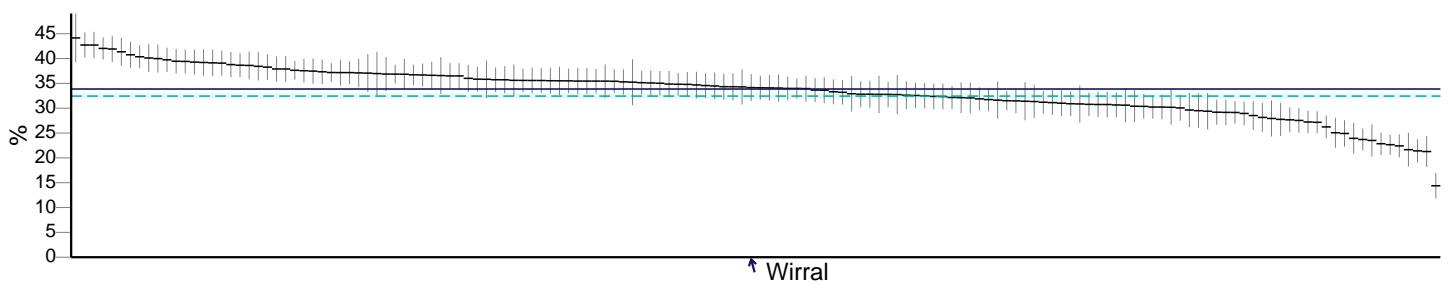
Smoking Prevalence in adults in routine and manual occupations - never smoked (APS) (2016)



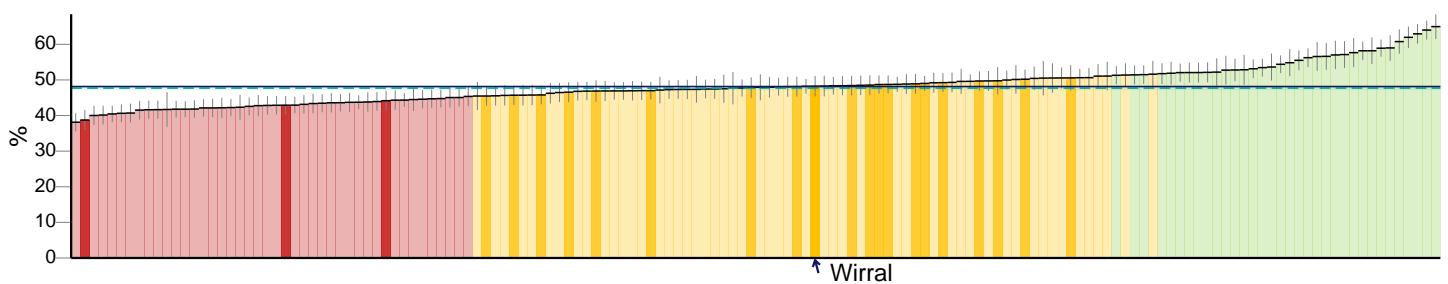
Smoking Prevalence in adults - current smokers (IHS) (2014)



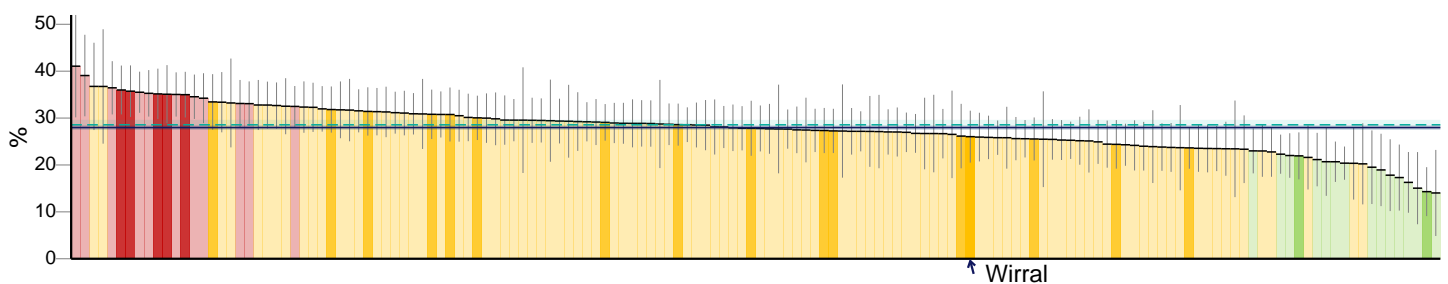
Smoking Prevalence in adults - ex-smokers (IHS) (2014)



Smoking Prevalence in adults - never smoked (IHS) (2014)



Smoking prevalence in adults in routine and manual occupations - current smokers (IHS) (2014)

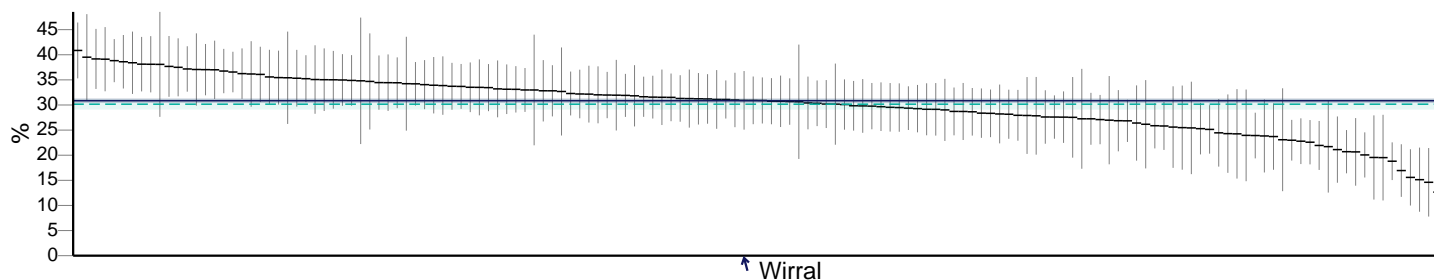


Key
 England value and confidence interval
 Significantly worse
 Not significantly different
 Significantly better
 Significance not tested
↑ Wirral
 North West region value and confidence interval

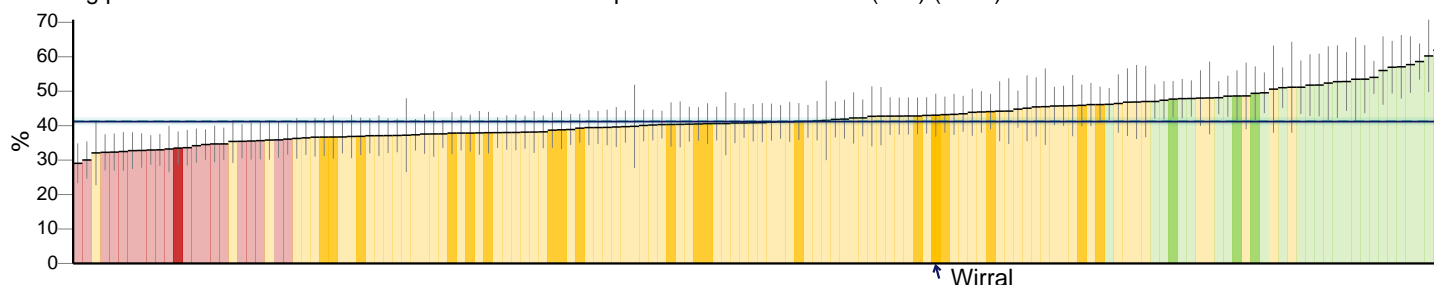
Wirral

Smoking prevalence in adults continued

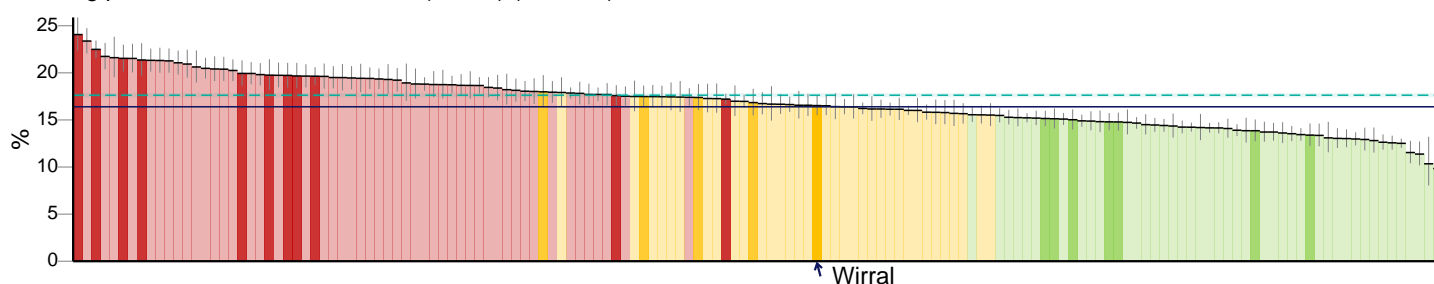
Smoking prevalence in adults in routine and manual occupations - ex-smokers (IHS) (2014)



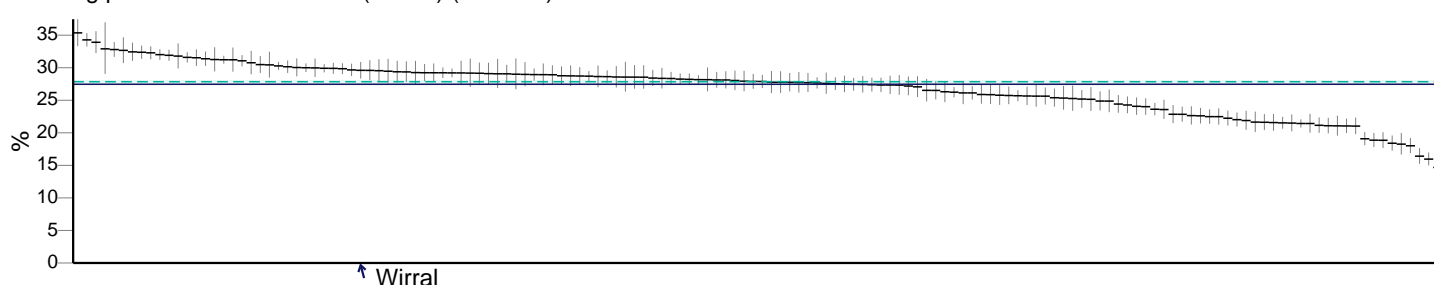
Smoking prevalence in adults in routine and manual occupations - never smoked (IHS) (2014)



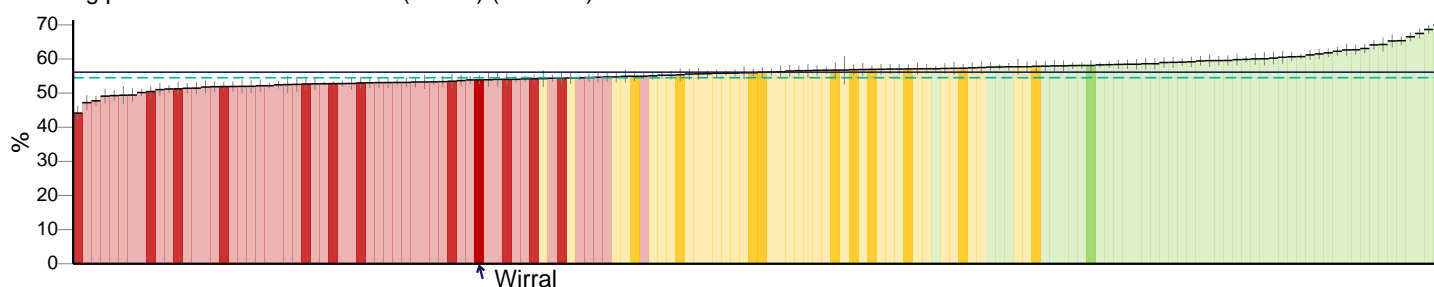
Smoking prevalence - current smokers (GPPS) (2015/16)



Smoking prevalence - ex smoker (GPPS) (2015/16)



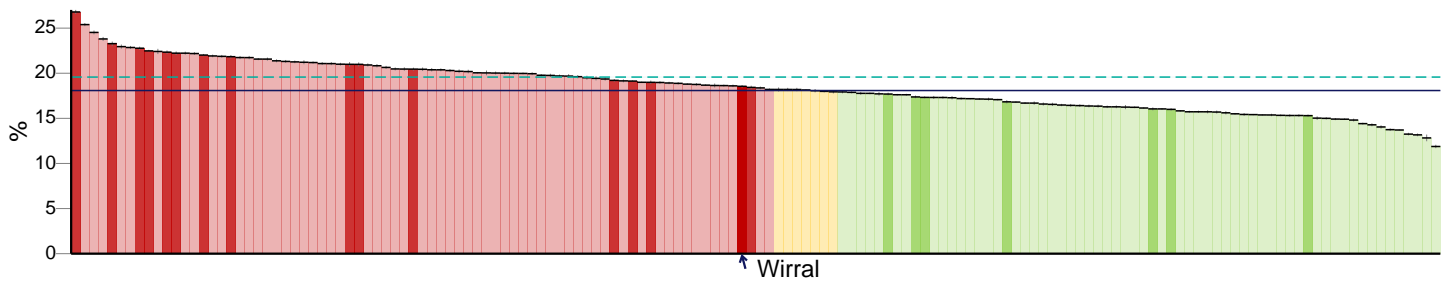
Smoking prevalence - never smoked (GPPS) (2015/16)



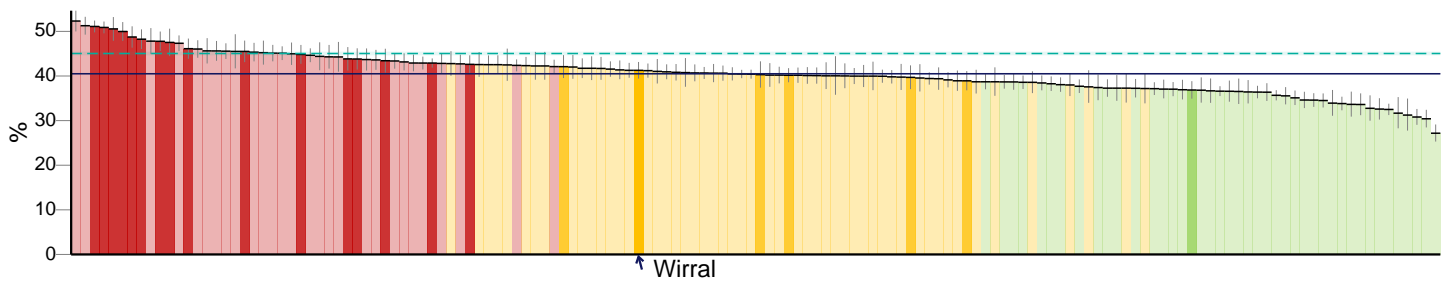
Key England value and confidence interval ↑ Wirral North West region value and confidence interval
 Significantly worse Not significantly different Significantly better Significance not tested

Smoking prevalence in adults continued

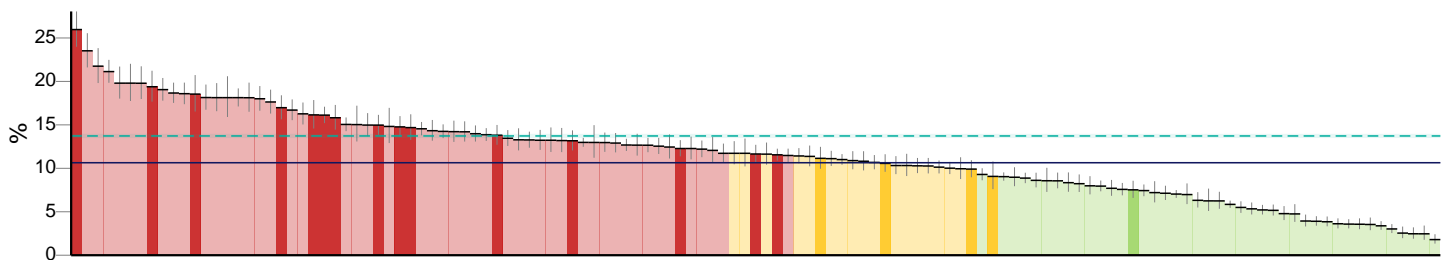
Smoking prevalence in adults - current smokers (QOF) (2015/16)



Smoking prevalence in adults with serious mental illness (SMI) (2014/15)



Smoking status at time of delivery (2015/16)



Key England value and confidence interval ↑ Wirral North West region value and confidence interval
 Significantly worse Not significantly different Significantly better Significance not tested

Wirral

Smoking prevalence in young people

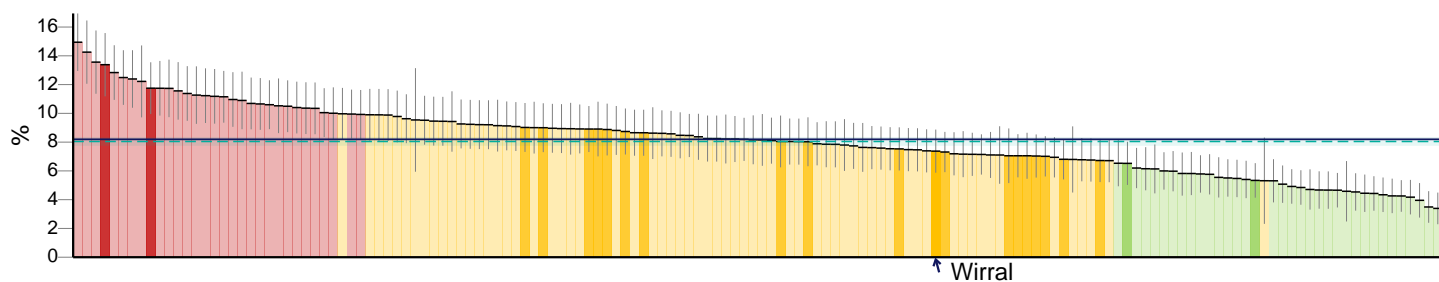
Smoking prevalence age 15 years - regular smokers (SDD survey) (2014)

No data

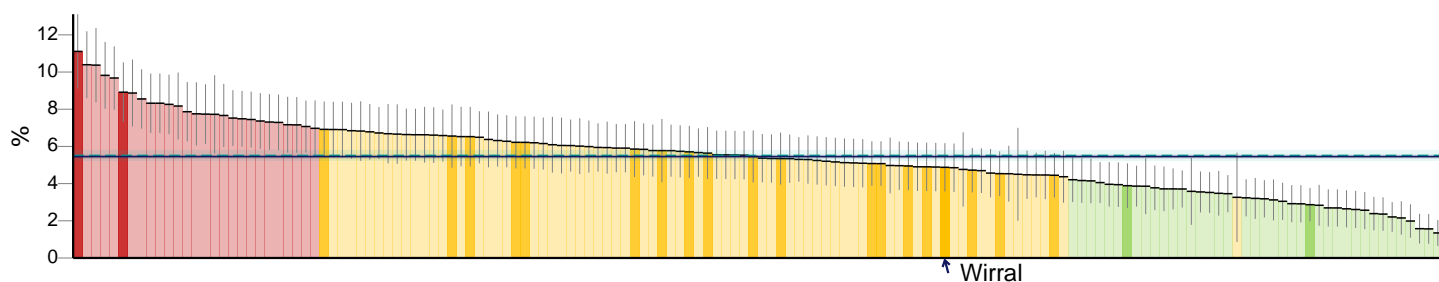
Smoking prevalence age 15 years - occasional smokers (SDD survey) (2014)

No data

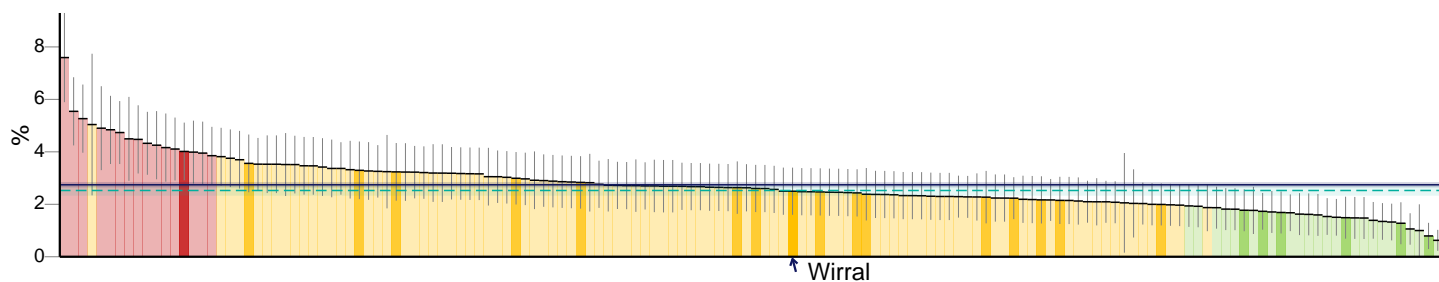
Smoking prevalence at age 15 - current smokers (WAY survey) (2014/15)



Smoking prevalence at age 15 - regular smokers (WAY survey) (2014/15)



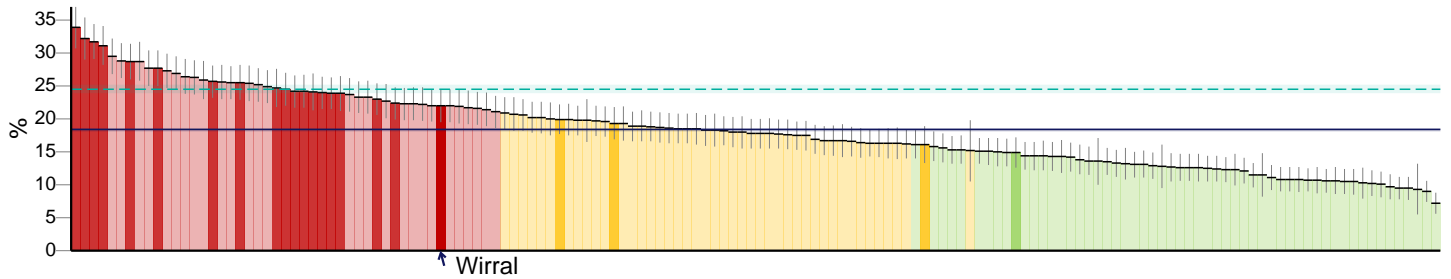
Smoking prevalence at age 15 - occasional smokers (WAY survey) (2014/15)



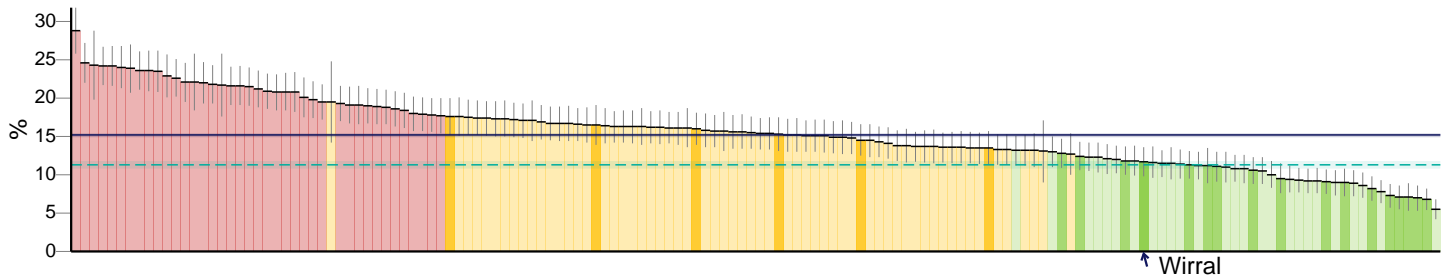
Key
 England value and confidence interval
 Significantly worse
 Not significantly different
 Significantly better
 Significance not tested
↑ Wirral
--- North West region value and confidence interval

Smoking prevalence in young people continued

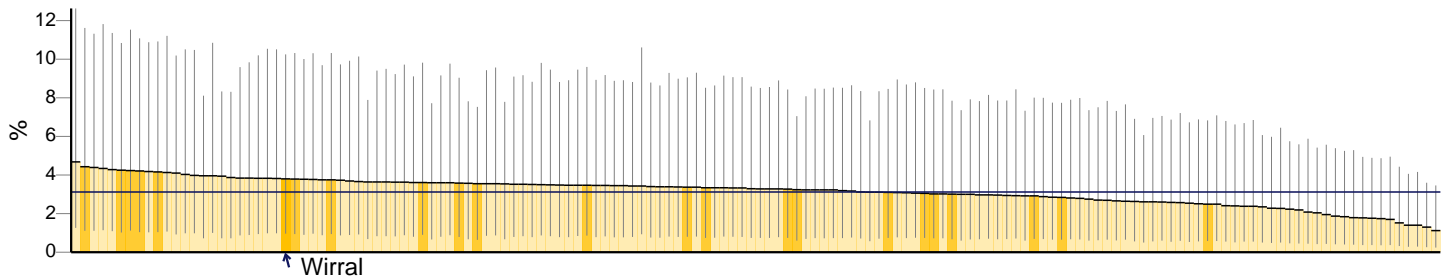
Use of e-cigarettes at age 15 years (WAY survey) (2014/15)



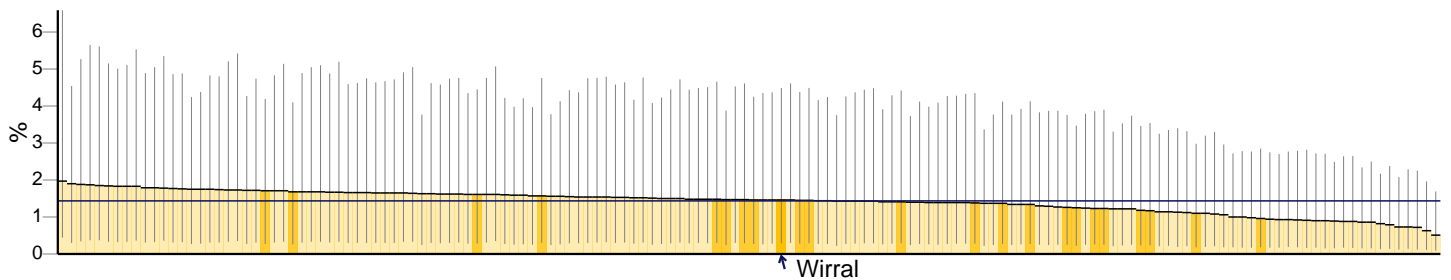
Use of other tobacco products at age 15 years (WAY survey) (2014/15)



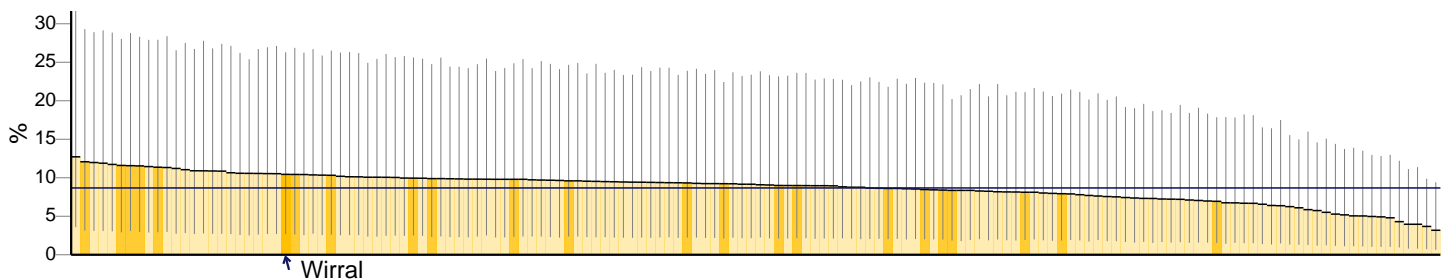
Smoking prevalence at ages 11-15 - regular smokers (modelled estimates) (2009 - 12)



Smoking prevalence at ages 11-15 - occasional smokers (modelled estimates) (2009 - 12)



Smoking prevalence at age 15 - regular smokers (modelled estimates) (2009 - 12)

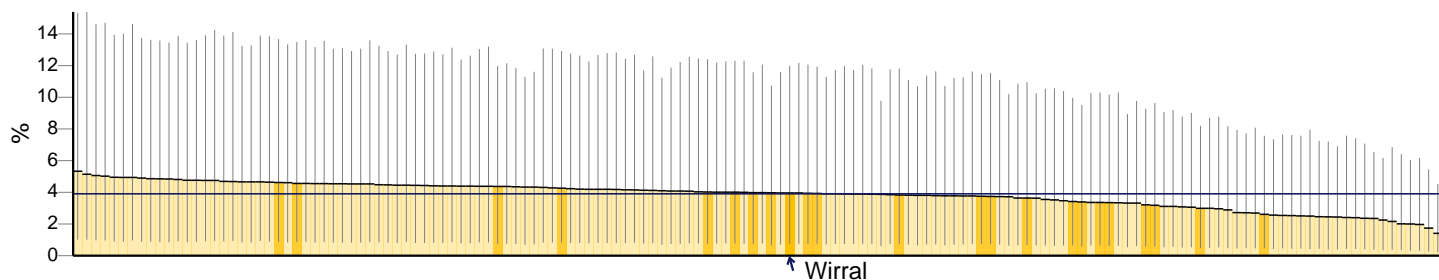


Key
 England value and confidence interval
 Not significantly different
 Significantly better
 Significance not tested
↑ Wirral
 North West region value and confidence interval

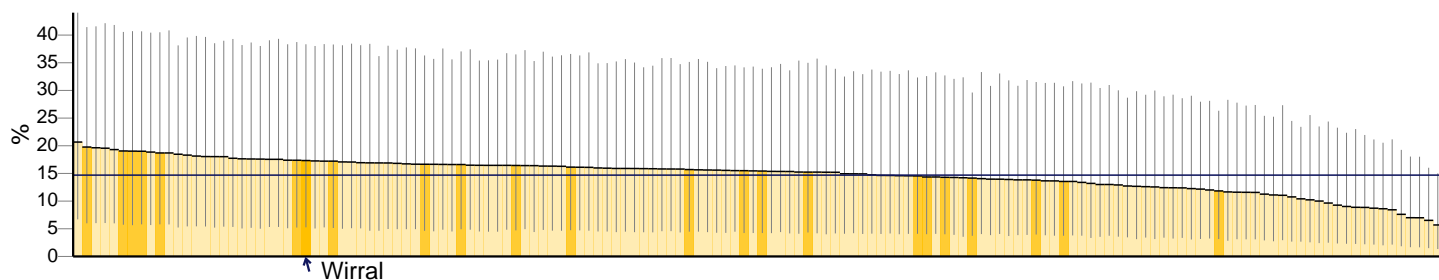
Wirral

Smoking prevalence in young people continued

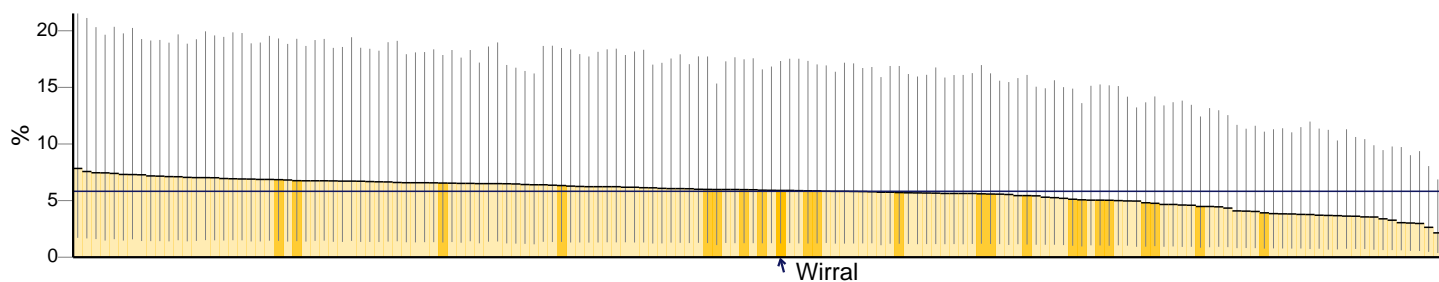
Smoking prevalence at age 15 - occasional smokers (modelled estimates) (2009 - 12)



Smoking prevalence at ages 16-17 - regular smokers (modelled estimates) (2009 - 12)



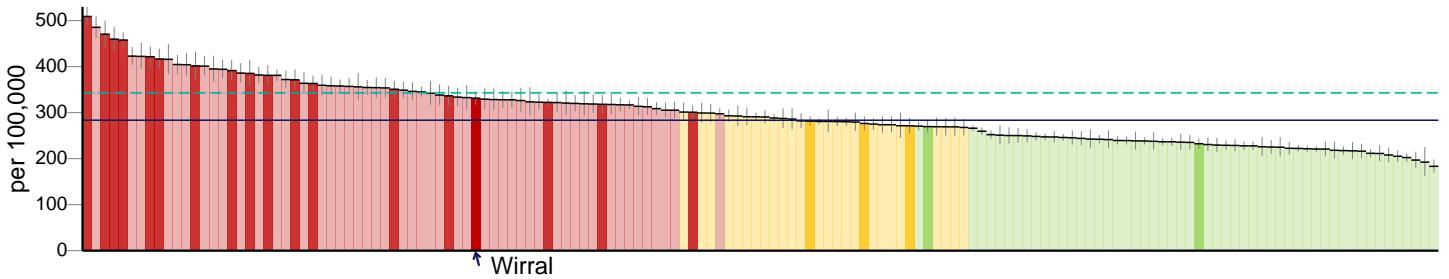
Smoking prevalence at ages 16-17 - occasional smokers (modelled estimates) (2009 - 12)



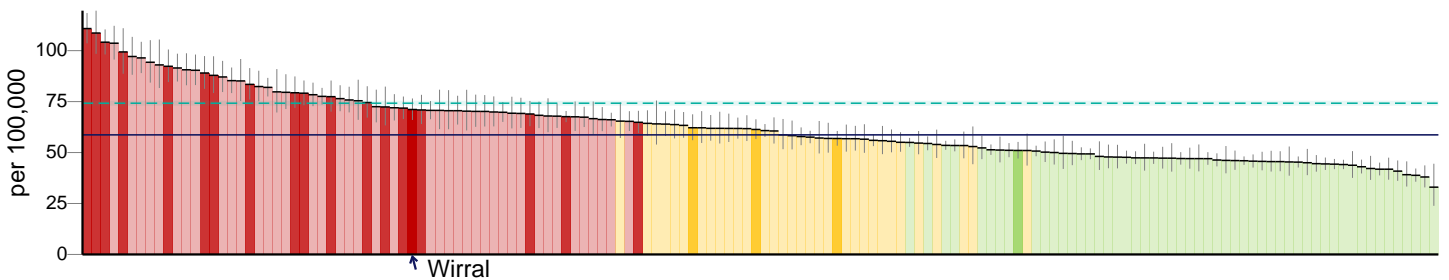
Key England value and confidence interval ↑ Wirral North West region value and confidence interval
 ■ Significantly worse ■ Not significantly different ■ Significantly better □ Significance not tested

Smoking related mortality

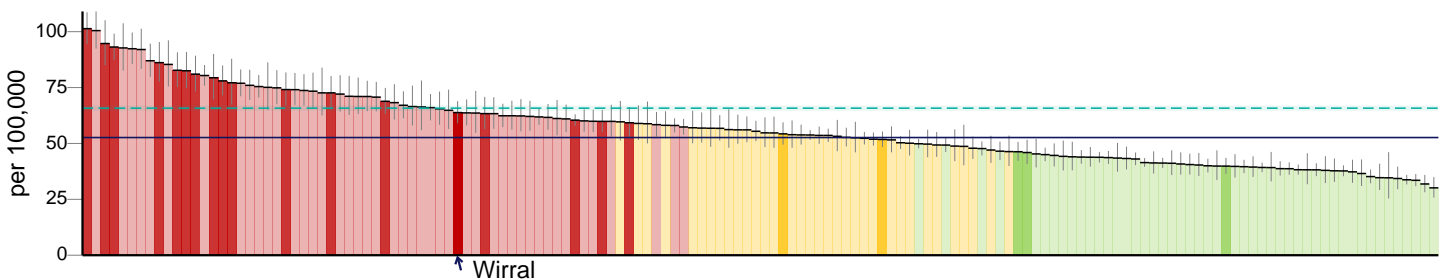
Smoking attributable mortality (2013 - 15)



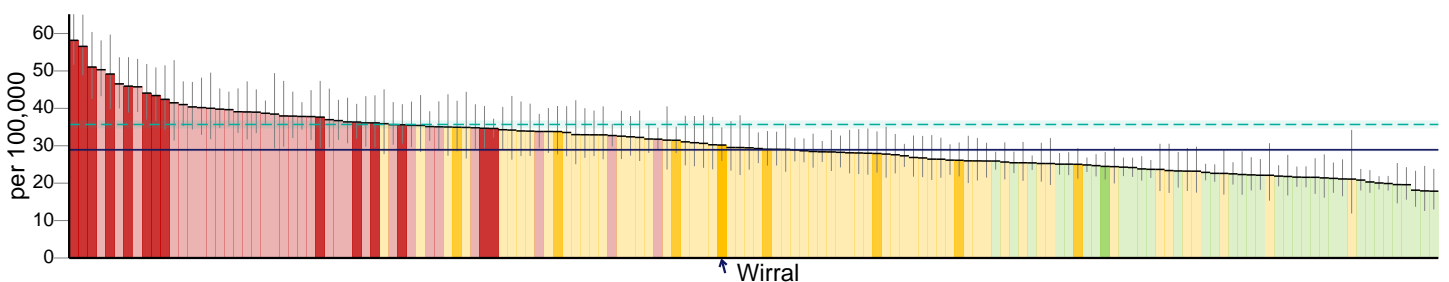
Deaths from lung cancer (2013 - 15)



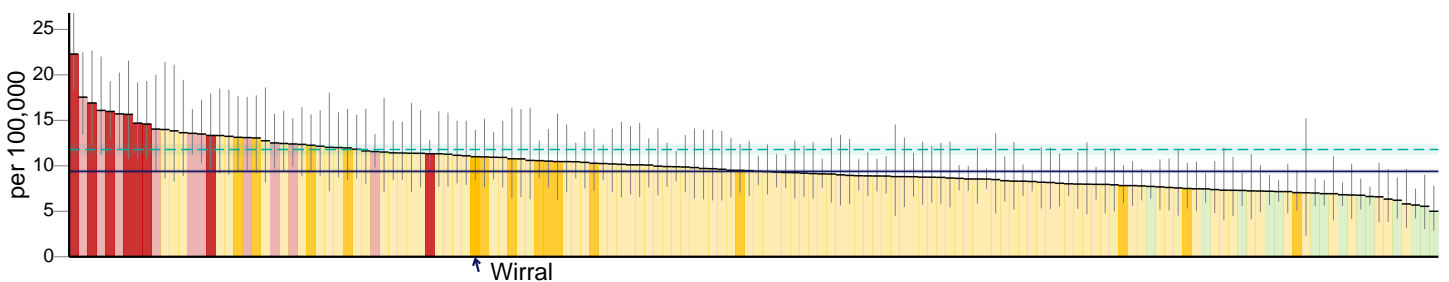
Deaths from chronic obstructive pulmonary disease (2013 - 15)



Smoking attributable deaths from heart disease (2013 - 15)



Smoking attributable deaths from stroke (2013 - 15)

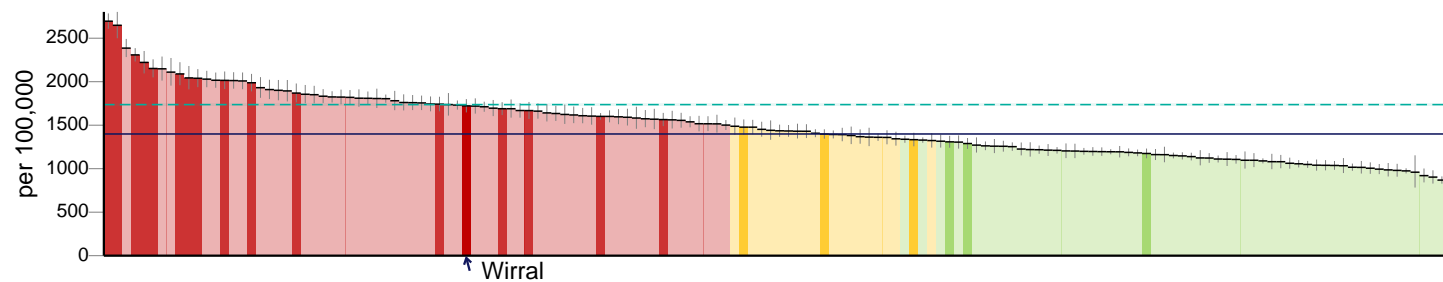


Key England value and confidence interval North West region value and confidence interval
 Significantly worse Not significantly different Significantly better Significance not tested

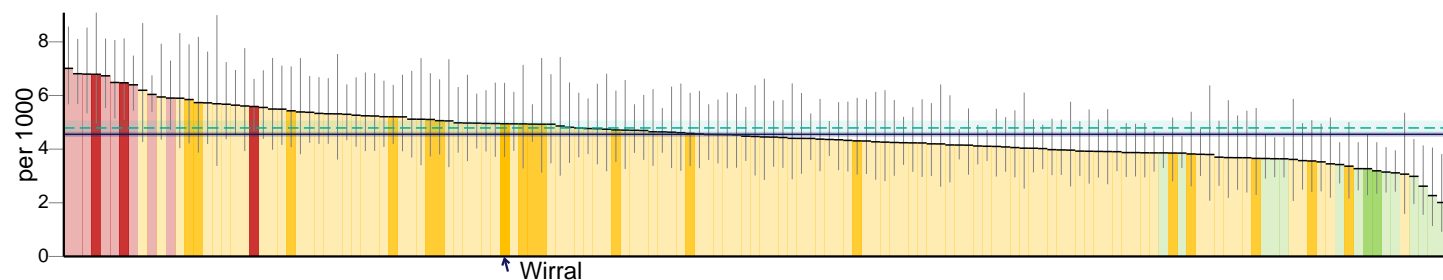
Wirral

Smoking related mortality continued

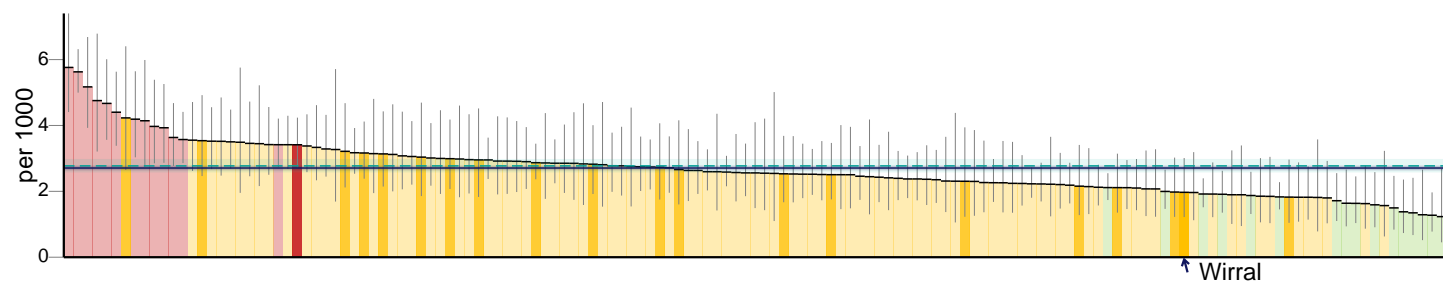
Potential years of life lost due to smoking related illness (2013 - 15)



Stillbirth rate (2013 - 15)



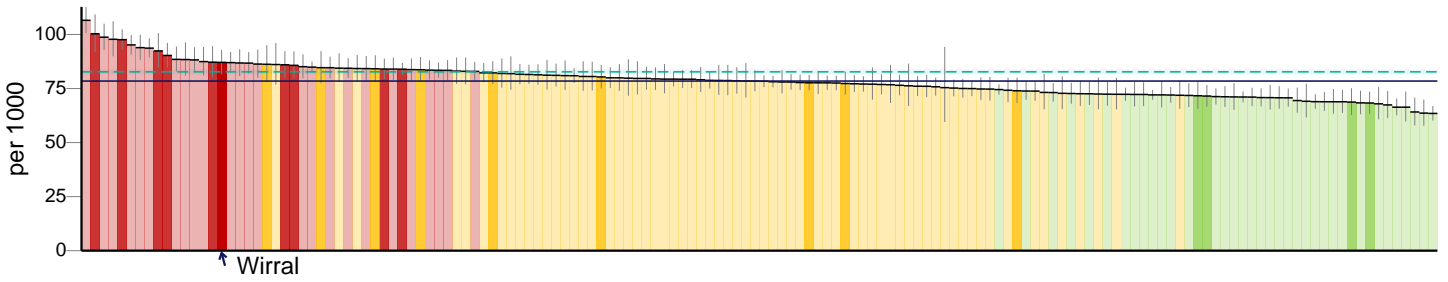
Neonatal mortality (2013 - 15)



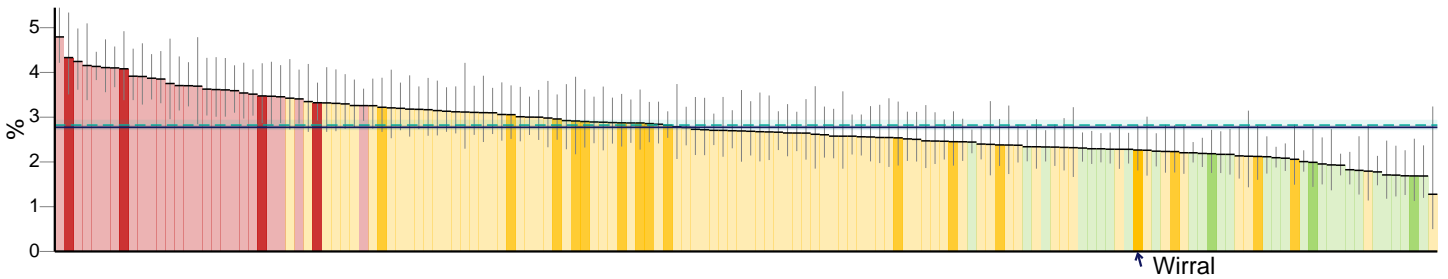
Key
 England value and confidence interval
 Significantly worse
 Not significantly different
 Significantly better
 Significance not tested
↑ Wirral
 North West region value and confidence interval

Smoking related ill health

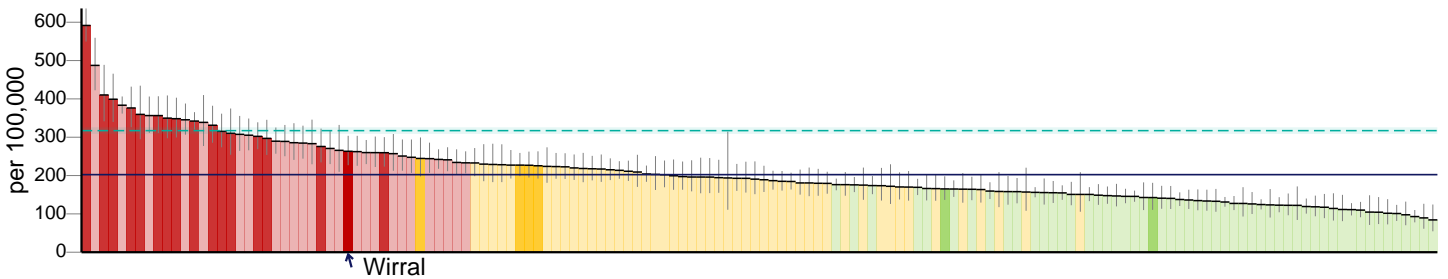
Premature births (less than 37 weeks gestation) (2013 - 15)



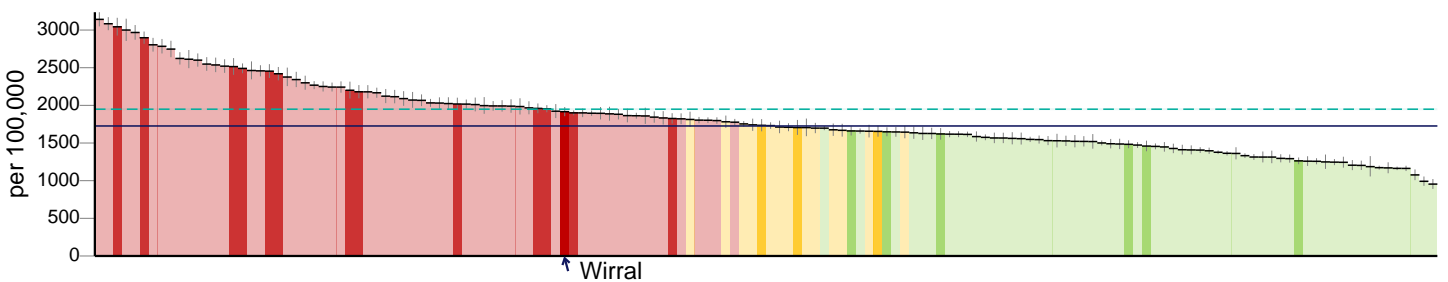
Low birth weight of term babies (2015)



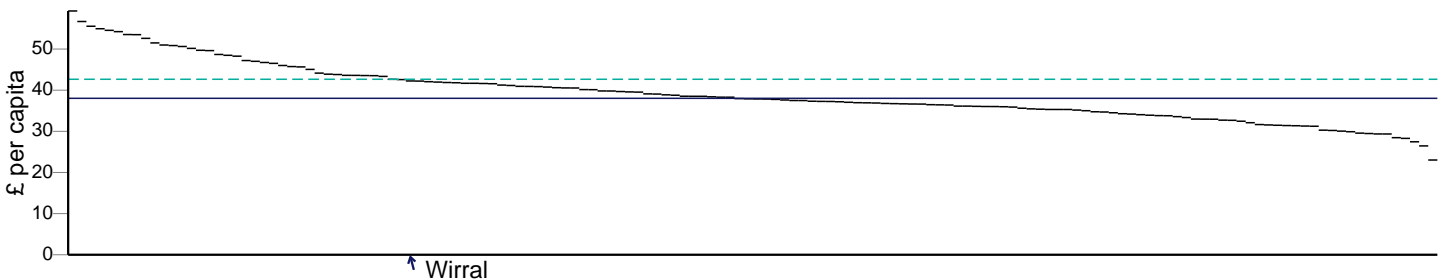
Hospital admissions for asthma (under 19 years) (2015/16)



Smoking attributable hospital admissions (2015/16)



Cost per capita of smoking attributable hospital admissions (2011/12)

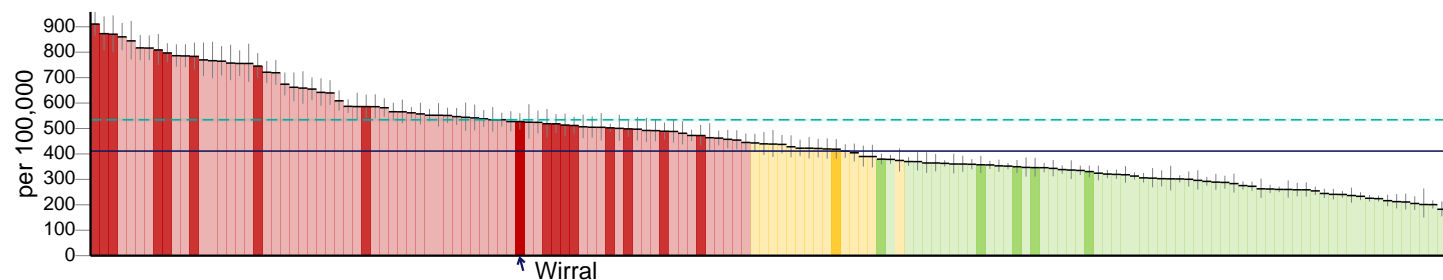


Key
 England value and confidence interval
 Significantly worse
 Not significantly different
 Significantly better
 Significance not tested
↑ Wirral
 North West region value and confidence interval

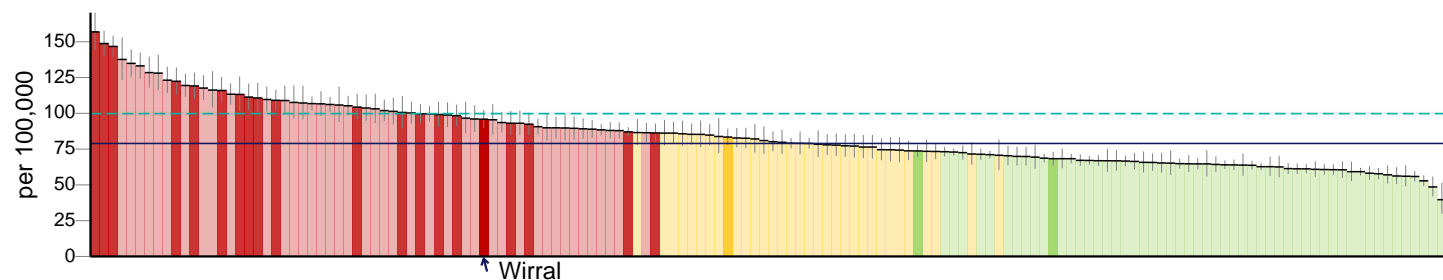
Wirral

Smoking related ill health continued

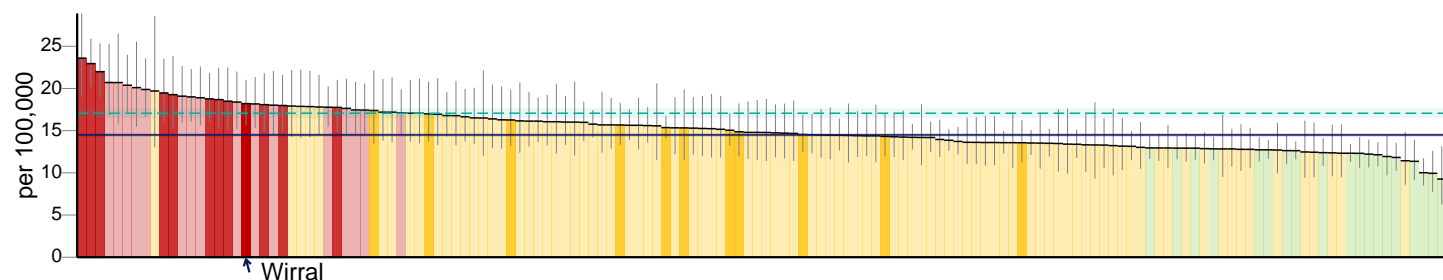
Emergency hospital admissions for COPD (2015/16)



Lung cancer registrations (2013 - 15)



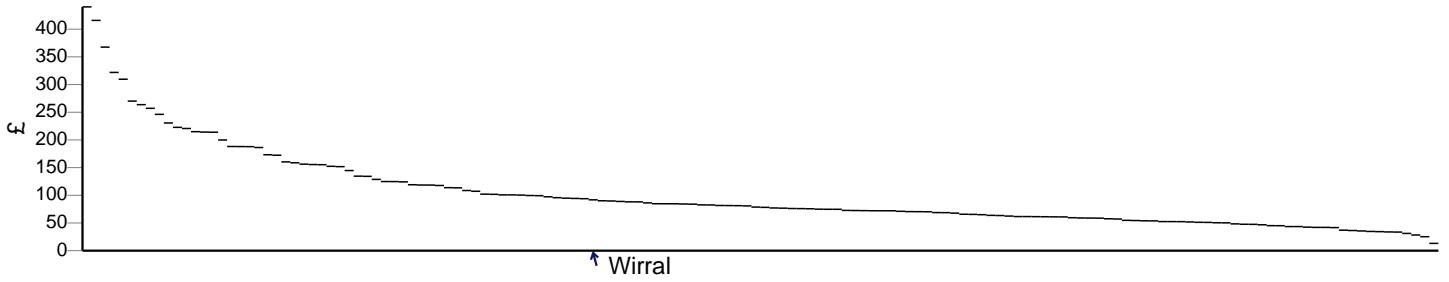
Oral cancer registrations (2013 - 15)



Key England value and confidence interval ↑ Wirral North West region value and confidence interval
 Significantly worse Not significantly different Significantly better Significance not tested

Impact of smoking

Indicative tobacco sales figures (£ millions) (2013)



Illicit tobacco: tax gap (£ millions) (2015/16)

No data

Illicit tobacco: share of cigarette sales (%) (2015/16)

No data

Fatalities from accidental fires ignited by smoking related materials (%) (2015/16)

No data

Accidental fires ignited by smoking related materials (%) (2015/16)

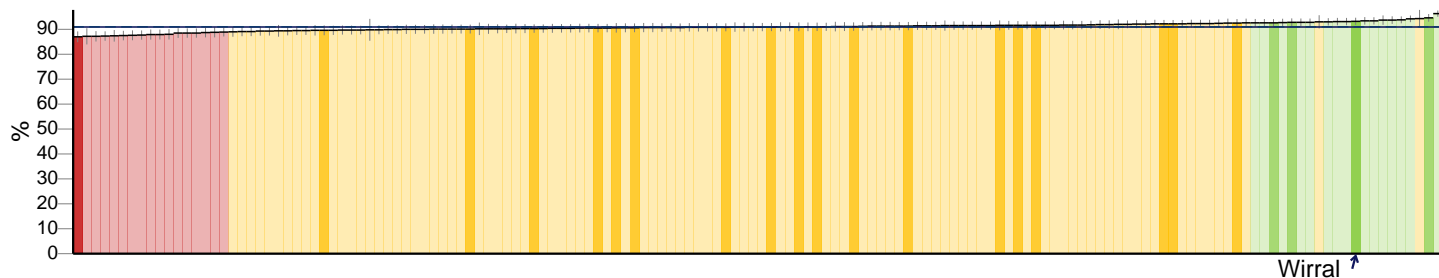
No data

Key
 England value and confidence interval
 North West region value and confidence interval
 ↑ Wirral
 Not significantly different
 Significantly better
 Significantly worse
 Significance not tested

Wirral

Impact of smoking continued

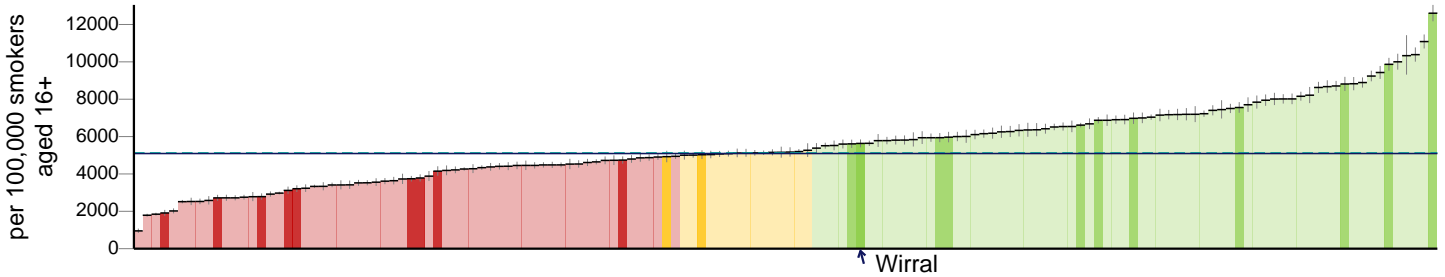
Attitudes to smoking in 15 year olds - 'smoking causes harm to others' (WAY survey) (2014/15)



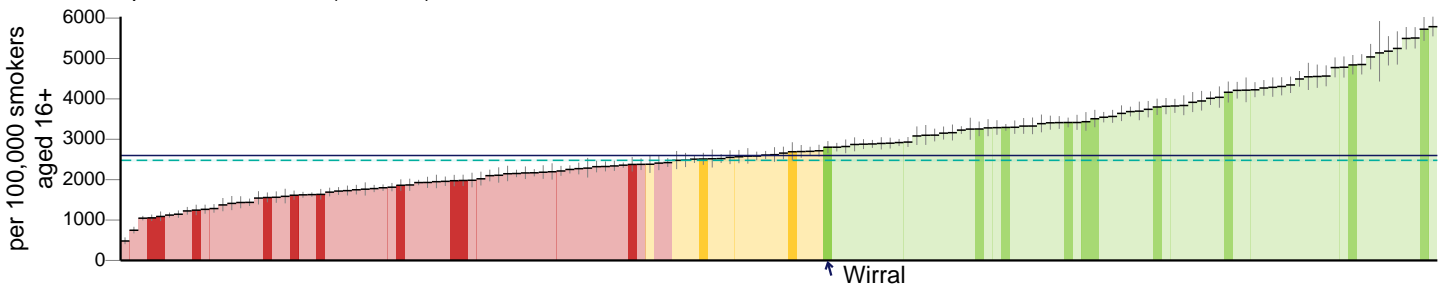
Key England value and confidence interval ↑ Wirral North West region value and confidence interval
 ■ Significantly worse ■ Not significantly different ■ Significantly better □ Significance not tested

Smoking quitters

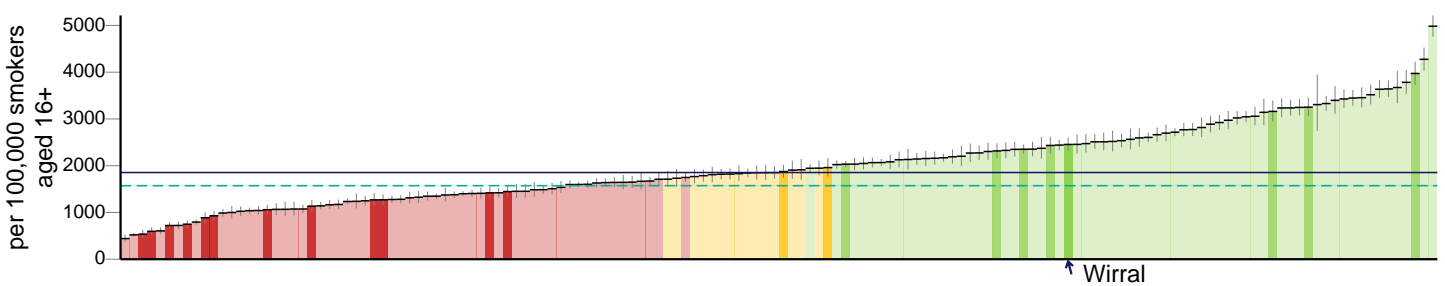
Number setting a quit date (2015/16)



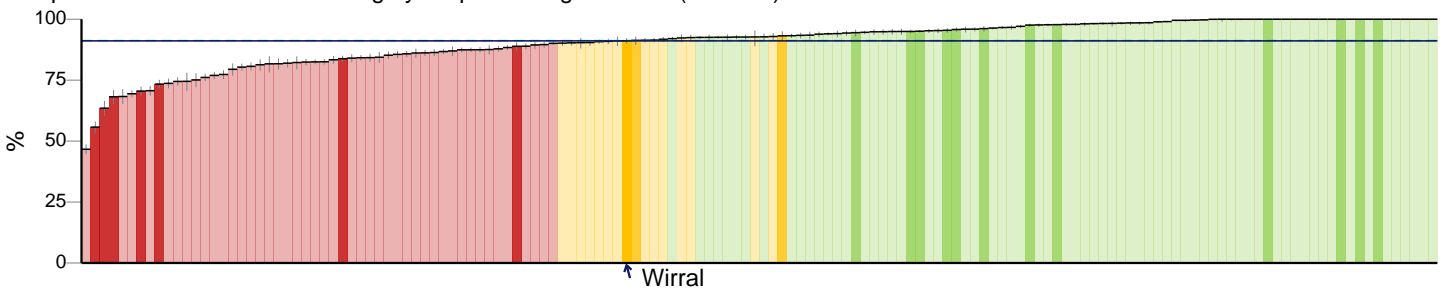
Successful quitters at 4 weeks (2015/16)



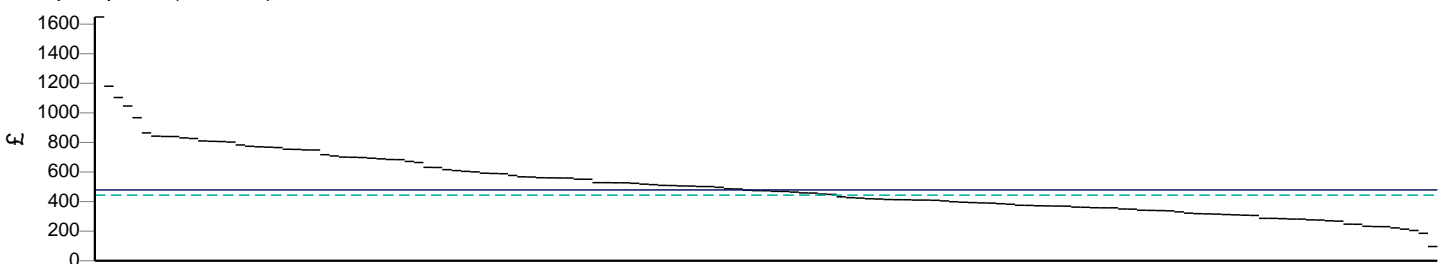
Successful quitters (CO validated) at 4 weeks (2015/16)



Completeness of NS-SEC recording by Stop Smoking Services (2015/16)



Cost per quitter (2015/16)

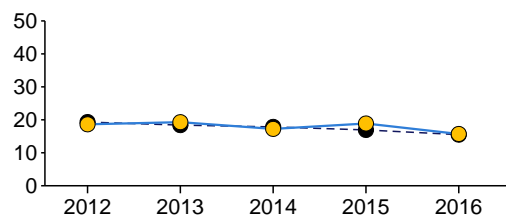


Key
 England value and confidence interval
 Significantly worse
 Not significantly different
 Significantly better
 Significance not tested
↑ Wirral
 North West region value and confidence interval

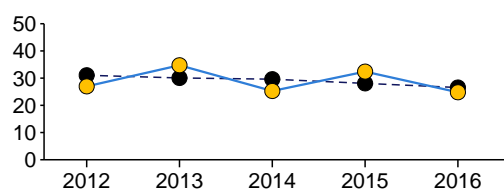
Trends

Key Indicators

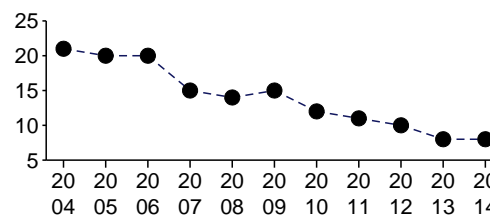
Smoking Prevalence in adults - current smokers (APS) - %



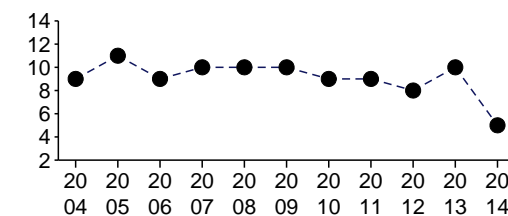
Smoking Prevalence in adults in routine and manual occupations - current smokers (APS) - %



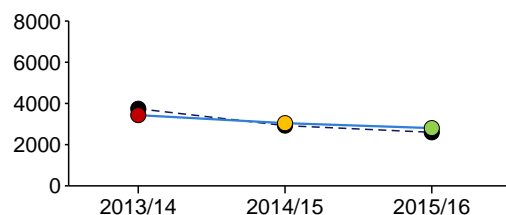
Smoking prevalence age 15 years - regular smokers (SDD survey) - %



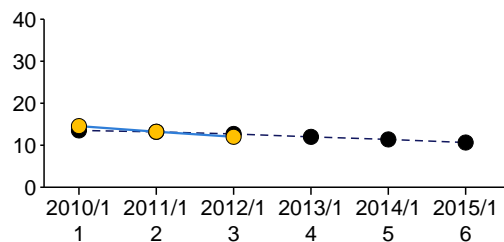
Smoking prevalence age 15 years - occasional smokers (SDD survey) - %



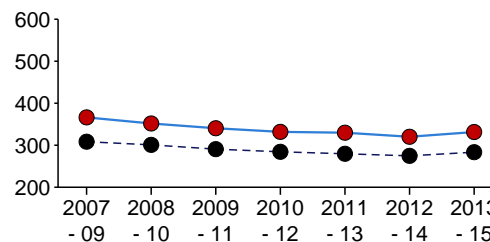
Successful quitters at 4 weeks - per 100,000 smokers aged 16+



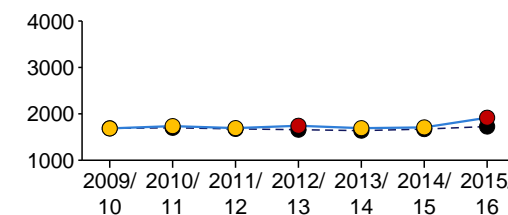
Smoking status at time of delivery - %



Smoking attributable mortality - per 100,000



Smoking attributable hospital admissions - per 100,000



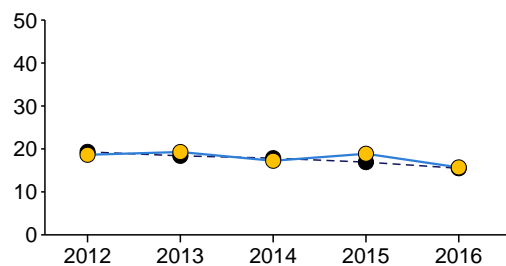
Supporting information - Deprivation score (IMD 2015)



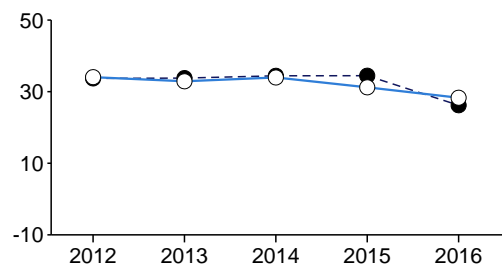
Key ● England ● Significantly worse ● Not significantly different ● Significantly better ○ Significance not tested

Smoking prevalence in adults

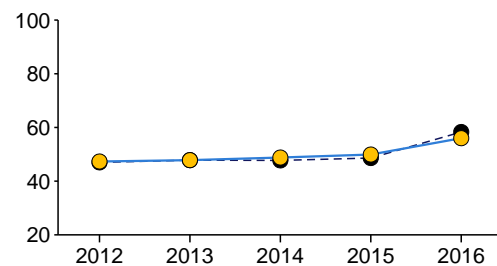
Smoking Prevalence in adults - current smokers (APS) - %



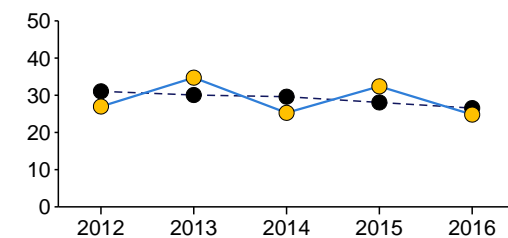
Smoking Prevalence in adults - ex smokers (APS) - %



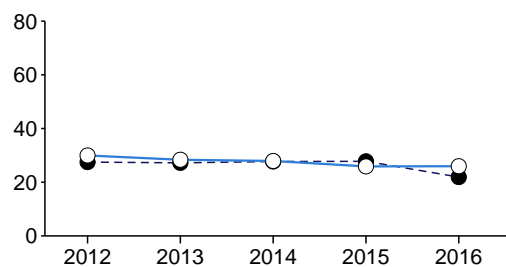
Smoking Prevalence in adults - never smoked (APS) - %



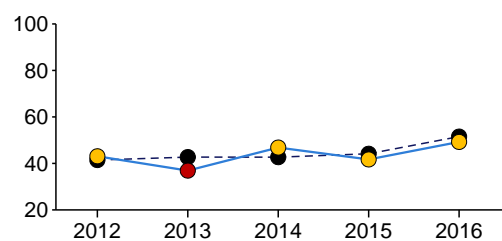
Smoking Prevalence in adults in routine and manual occupations - current smokers (APS) - %



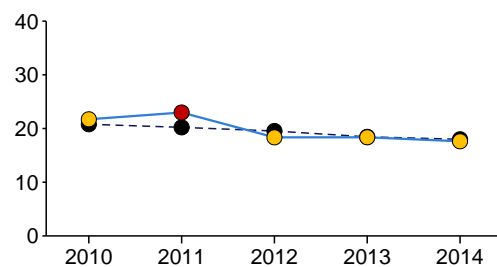
Smoking Prevalence in adults in routine and manual occupations - ex smokers (APS) - %



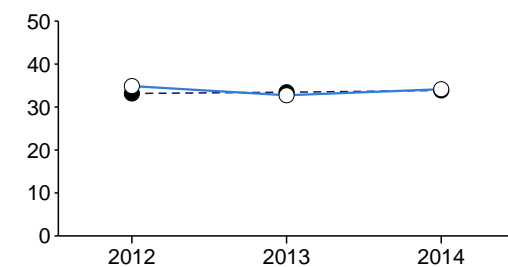
Smoking Prevalence in adults in routine and manual occupations - never smoked (APS) - %



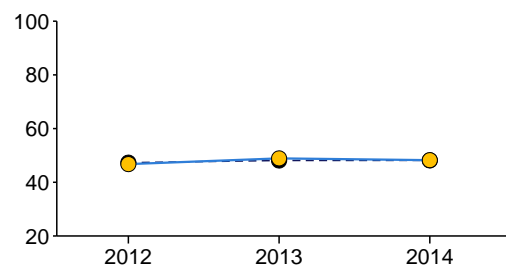
Smoking Prevalence in adults - current smokers (IHS) - %



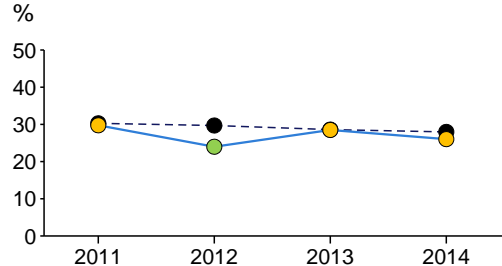
Smoking Prevalence in adults - ex-smokers (IHS) - %



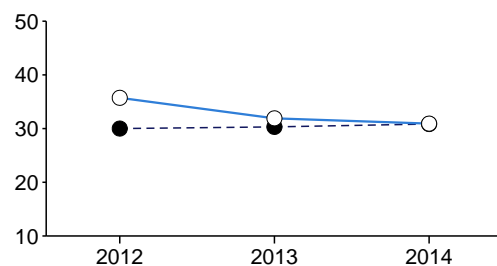
Smoking Prevalence in adults - never smoked (IHS) - %



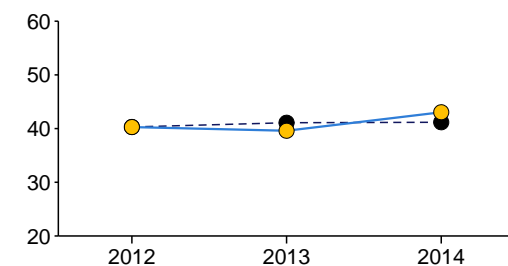
Smoking prevalence in adults in routine and manual occupations - current smokers (IHS) - %



Smoking prevalence in adults in routine and manual occupations - ex-smokers (IHS) - %



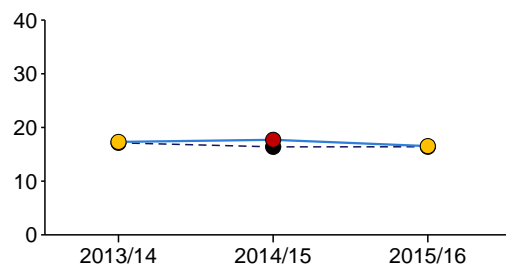
Smoking prevalence in adults in routine and manual occupations - never smoked (IHS) - %



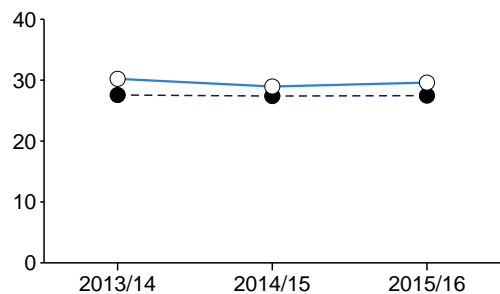
Key ● England ● Significantly worse ● Not significantly different ● Significantly better ○ Significance not tested

Smoking prevalence in adults continued

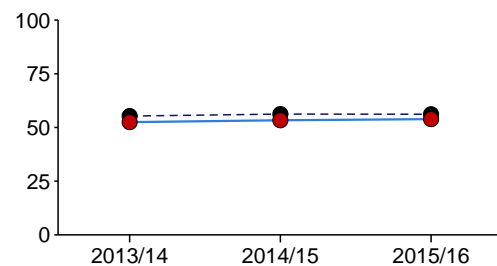
Smoking prevalence - current smokers (GPPS) - %



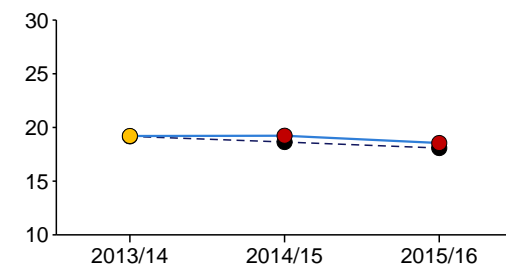
Smoking prevalence - ex smoker (GPPS) - %



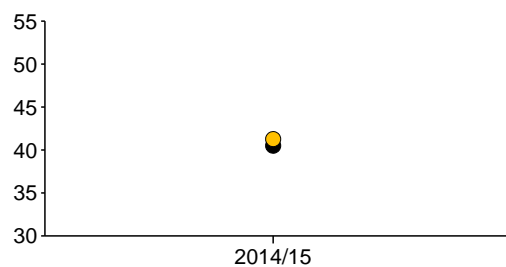
Smoking prevalence - never smoked (GPPS) - %



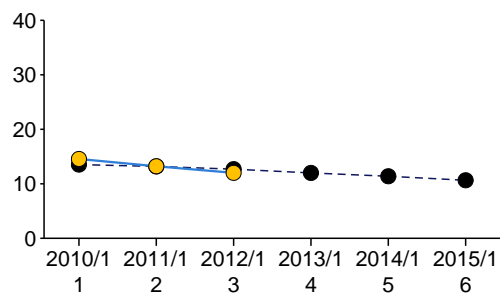
Smoking prevalence in adults - current smokers (QOF) - %



Smoking prevalence in adults with serious mental illness (SMI) - %



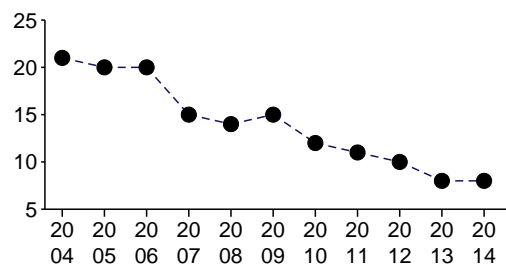
Smoking status at time of delivery - %



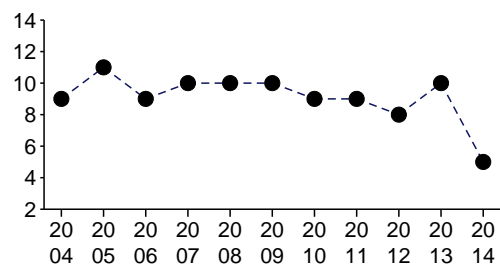
Key ● England ● Significantly worse ● Not significantly different ● Significantly better ○ Significance not tested

Smoking prevalence in young people

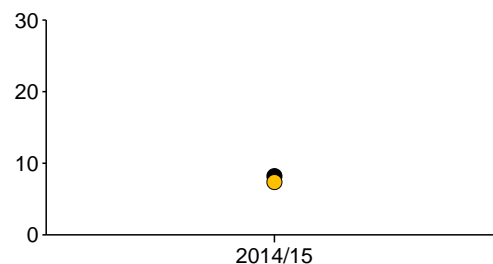
Smoking prevalence age 15 years - regular smokers (SDD survey) - %



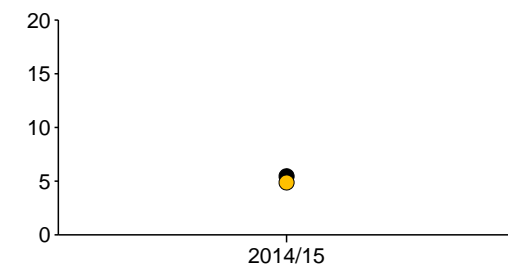
Smoking prevalence age 15 years - occasional smokers (SDD survey) - %



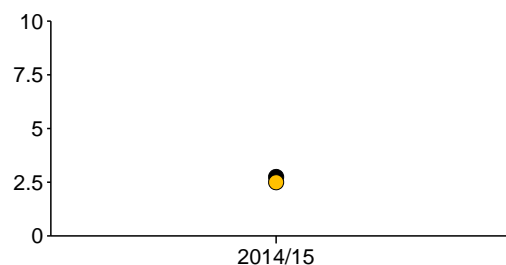
Smoking prevalence at age 15 - current smokers (WAY survey) - %



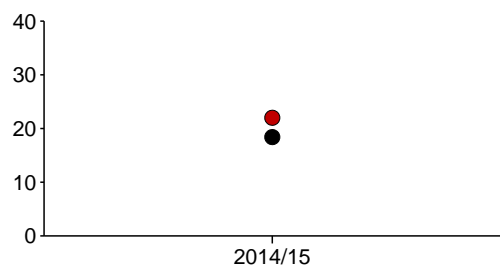
Smoking prevalence at age 15 - regular smokers (WAY survey) - %



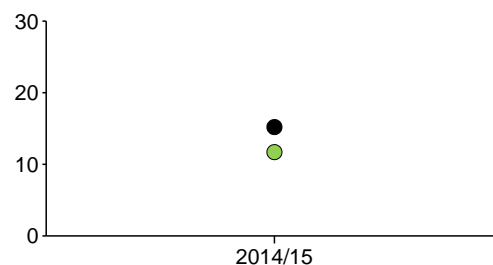
Smoking prevalence at age 15 - occasional smokers (WAY survey) - %



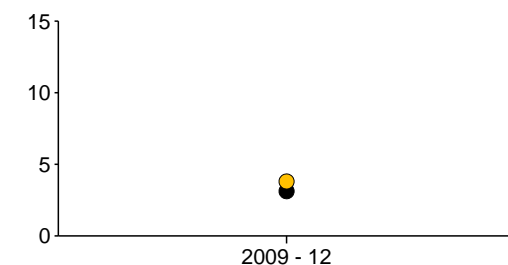
Use of e-cigarettes at age 15 years (WAY survey) - %



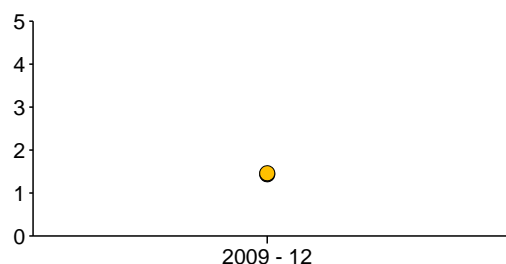
Use of other tobacco products at age 15 years (WAY survey) - %



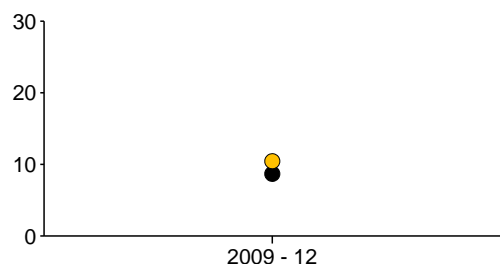
Smoking prevalence at ages 11-15 - regular smokers (modelled estimates) - %



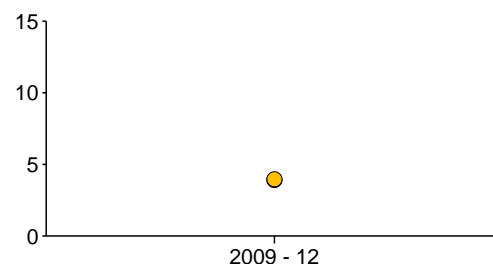
Smoking prevalence at ages 11-15 - occasional smokers (modelled estimates) - %



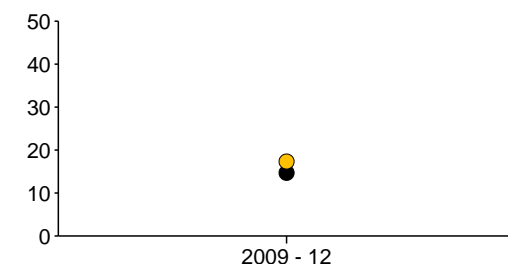
Smoking prevalence at age 15 - regular smokers (modelled estimates) - %



Smoking prevalence at age 15 - occasional smokers (modelled estimates) - %



Smoking prevalence at ages 16-17 - regular smokers (modelled estimates) - %

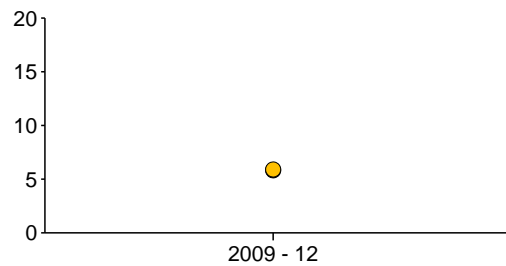


Key ● England ● Significantly worse ● Not significantly different ● Significantly better ○ Significance not tested

Wirral

Smoking prevalence in young people continued

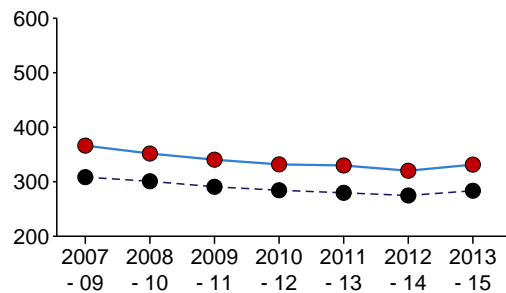
Smoking prevalence at ages 16-17 - occasional smokers (modelled estimates) - %



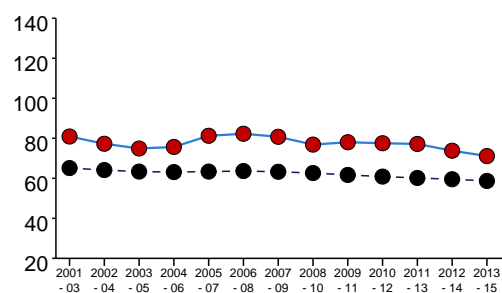
Key ● England ● Significantly worse ● Not significantly different ● Significantly better ○ Significance not tested

Smoking related mortality

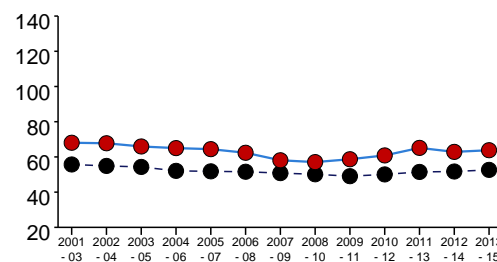
Smoking attributable mortality - per 100,000



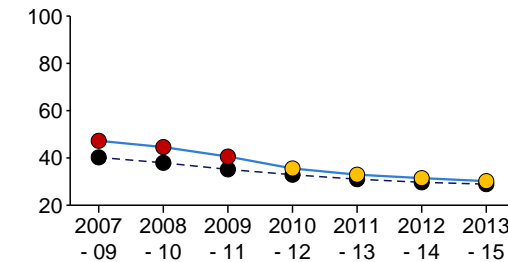
Deaths from lung cancer - per 100,000



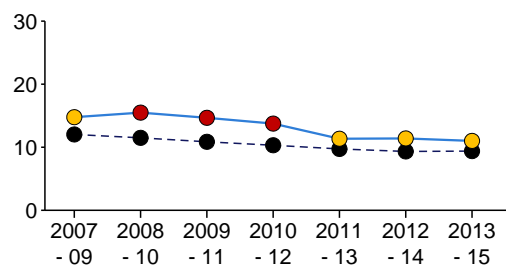
Deaths from chronic obstructive pulmonary disease - per 100,000



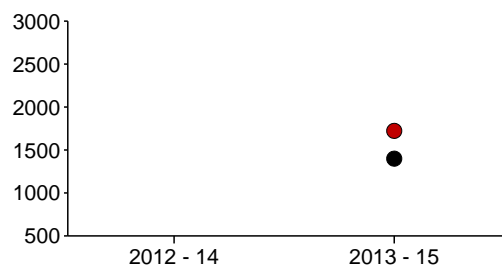
Smoking attributable deaths from heart disease - per 100,000



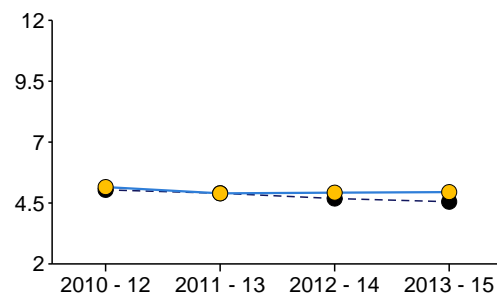
Smoking attributable deaths from stroke - per 100,000



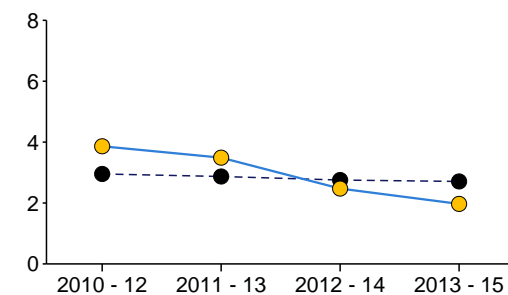
Potential years of life lost due to smoking related illness - per 100,000



Stillbirth rate - per 1000



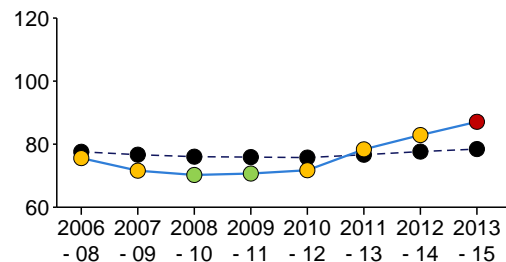
Neonatal mortality - per 1000



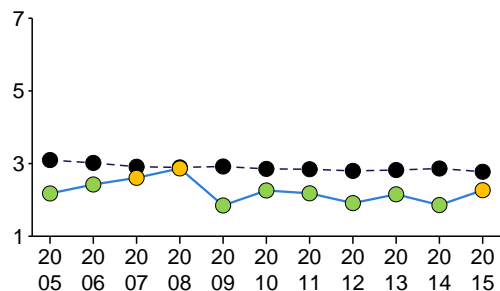
Key ● England ● Significantly worse ● Not significantly different ● Significantly better ○ Significance not tested

Smoking related ill health

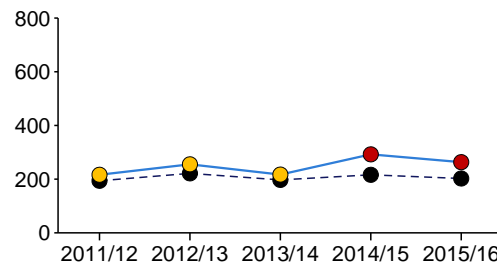
Premature births (less than 37 weeks gestation) - per 1000



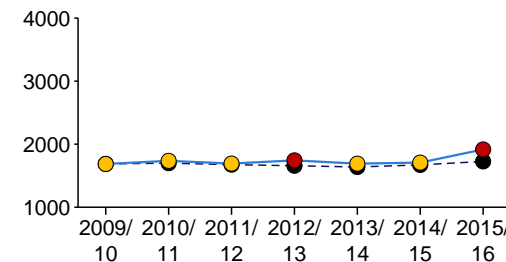
Low birth weight of term babies - %



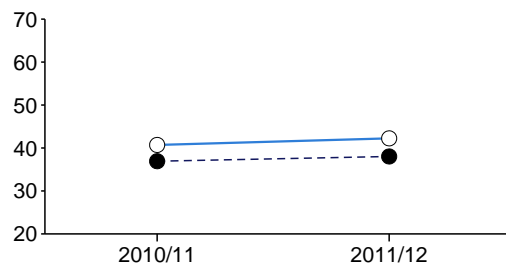
Hospital admissions for asthma (under 19 years) - per 100,000



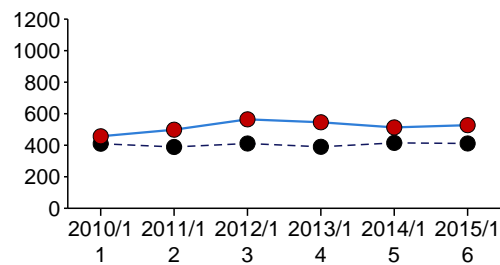
Smoking attributable hospital admissions - per 100,000



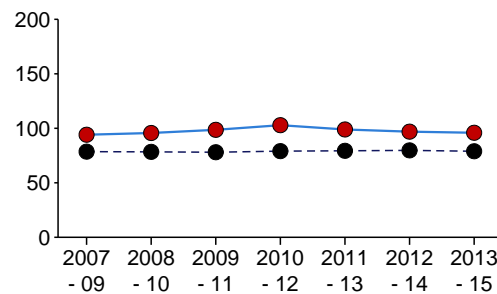
Cost per capita of smoking attributable hospital admissions - £ per capita



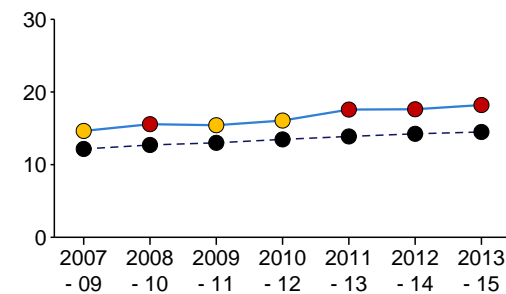
Emergency hospital admissions for COPD - per 100,000



Lung cancer registrations - per 100,000



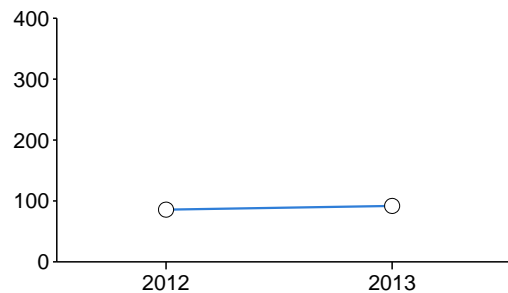
Oral cancer registrations - per 100,000



Key ● England ● Significantly worse ● Not significantly different ● Significantly better ○ Significance not tested

Impact of smoking

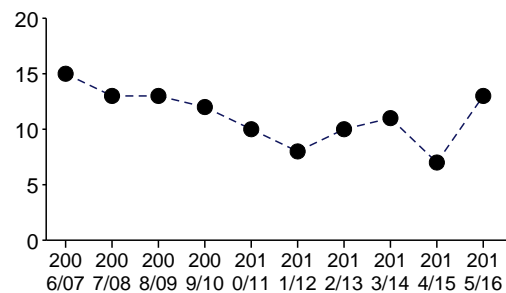
Indicative tobacco sales figures (£ millions) - £



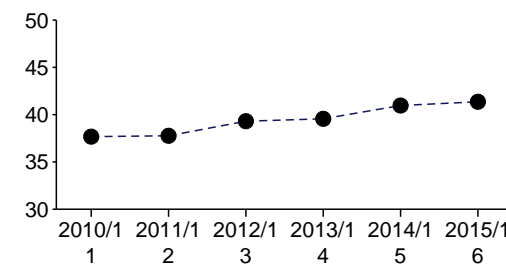
Illicit tobacco: tax gap (£ millions) - £

No data available

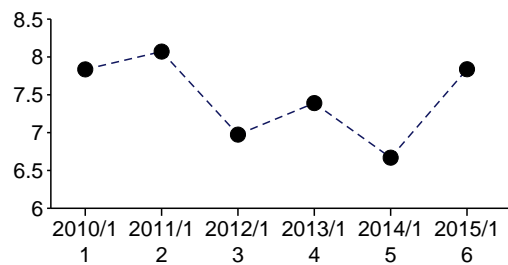
Illicit tobacco: share of cigarette sales (%) - %



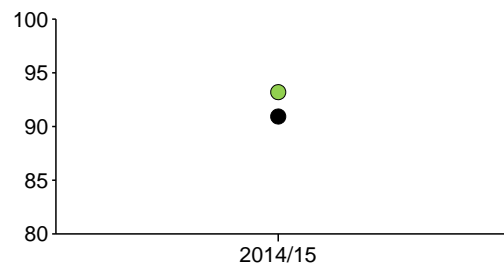
Fatalities from accidental fires ignited by smoking related materials (%) - %



Accidental fires ignited by smoking related materials (%) - %



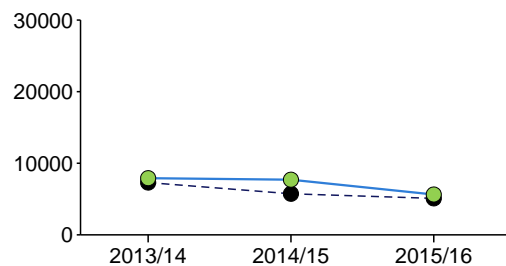
Attitudes to smoking in 15 year olds - 'smoking causes harm to others' (WAY survey) - %



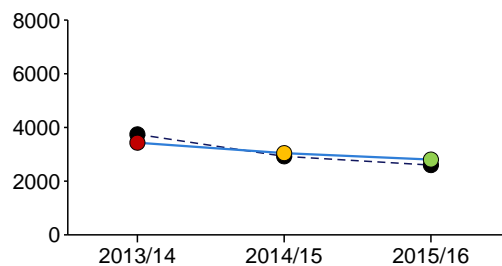
Key ● England ● Significantly worse ● Not significantly different ● Significantly better ○ Significance not tested

Smoking quitters

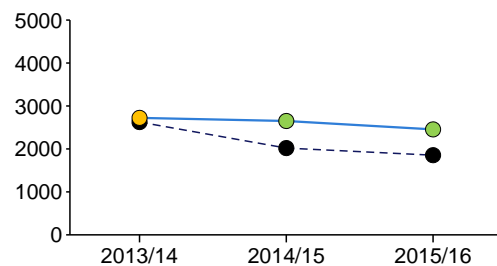
Number setting a quit date - per 100,000 smokers aged 16+



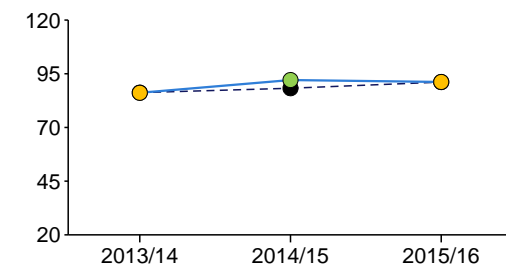
Successful quitters at 4 weeks - per 100,000 smokers aged 16+



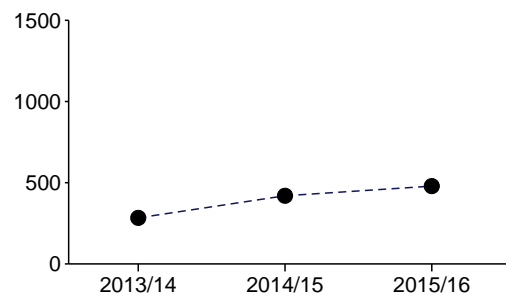
Successful quitters (CO validated) at 4 weeks - per 100,000 smokers aged 16+



Completeness of NS-SEC recording by Stop Smoking Services - %



Cost per quitter - £



Key ● England ● Significantly worse ● Not significantly different ● Significantly better ○ Significance not tested